

---

*This copy is for your personal, non-commercial use only.*

---

**If you wish to distribute this article to others**, you can order high-quality copies for your colleagues, clients, or customers by [clicking here](#).

**Permission to republish or repurpose articles or portions of articles** can be obtained by following the guidelines [here](#).

**The following resources related to this article are available online at [www.sciencemag.org](http://www.sciencemag.org) (this information is current as of May 2, 2011 ):**

**Updated information and services**, including high-resolution figures, can be found in the online version of this article at:

<http://www.sciencemag.org/content/329/5987/52.full.html>

**Supporting Online Material** can be found at:

<http://www.sciencemag.org/content/suppl/2010/05/18/science.1190719.DC1.html>

<http://www.sciencemag.org/content/suppl/2010/05/20/science.1190719.DC2.html>

A list of selected additional articles on the Science Web sites **related to this article** can be found at:

<http://www.sciencemag.org/content/329/5987/52.full.html#related>

This article **cites 21 articles**, 12 of which can be accessed free:

<http://www.sciencemag.org/content/329/5987/52.full.html#ref-list-1>

This article has been **cited by** 5 article(s) on the ISI Web of Science

This article has been **cited by** 18 articles hosted by HighWire Press; see:

<http://www.sciencemag.org/content/329/5987/52.full.html#related-urls>

This article appears in the following **subject collections**:

Genetics

<http://www.sciencemag.org/cgi/collection/genetics>

# Creation of a Bacterial Cell Controlled by a Chemically Synthesized Genome

Daniel G. Gibson,<sup>1</sup> John I. Glass,<sup>1</sup> Carole Lartigue,<sup>1</sup> Vladimir N. Noskov,<sup>1</sup> Ray-Yuan Chuang,<sup>1</sup> Mikkel A. Algire,<sup>1</sup> Gwynedd A. Benders,<sup>2</sup> Michael G. Montague,<sup>1</sup> Li Ma,<sup>1</sup> Monzia M. Moodie,<sup>1</sup> Chuck Merryman,<sup>1</sup> Sanjay Vashee,<sup>1</sup> Radha Krishnakumar,<sup>1</sup> Nacyra Assad-Garcia,<sup>1</sup> Cynthia Andrews-Pfannkoch,<sup>1</sup> Evgeniya A. Denisova,<sup>1</sup> Lei Young,<sup>1</sup> Zhi-Qing Qi,<sup>1</sup> Thomas H. Segall-Shapiro,<sup>1</sup> Christopher H. Calvey,<sup>1</sup> Prashanth P. Parmar,<sup>1</sup> Clyde A. Hutchison III,<sup>2</sup> Hamilton O. Smith,<sup>2</sup> J. Craig Venter<sup>1,2\*</sup>

We report the design, synthesis, and assembly of the 1.08-mega-base pair *Mycoplasma mycoides* JCVI-syn1.0 genome starting from digitized genome sequence information and its transplantation into a *M. capricolum* recipient cell to create new *M. mycoides* cells that are controlled only by the synthetic chromosome. The only DNA in the cells is the designed synthetic DNA sequence, including “watermark” sequences and other designed gene deletions and polymorphisms, and mutations acquired during the building process. The new cells have expected phenotypic properties and are capable of continuous self-replication.

In 1977, Sanger and colleagues determined the complete genetic sequence of phage  $\phi$ X174 (1), the first DNA genome to be completely sequenced. Eighteen years later, in 1995, our team was able to read the first complete genetic sequence of a self-replicating bacterium, *Haemophilus influenzae* (2). Reading the genetic sequence of a wide range of species has increased exponentially from these early studies. The ability to rapidly digitize genomic information has increased by more than eight orders of magnitude over the past 25 years (3). Efforts to understand all this new genomic information have spawned numerous new computational and experimental paradigms, yet our genomic knowledge remains very limited. No single cellular system has all of its genes understood in terms of their biological roles. Even in simple bacterial cells, do the chromosomes contain the entire genetic repertoire? If so, can a complete genetic system be reproduced by chemical synthesis starting with only the digitized DNA sequence contained in a computer?

Our interest in synthesis of large DNA molecules and chromosomes grew out of our efforts over the past 15 years to build a minimal cell that contains only essential genes. This work was inaugurated in 1995 when we sequenced the genome of *Mycoplasma genitalium*, a bacterium with the smallest complement of genes of any known organism capable of independent growth in the laboratory. More than 100 of the 485 protein-coding genes of *M. genitalium* are dispensable when disrupted one at a time (4–6).

We developed a strategy for assembling viral-sized pieces to produce large DNA molecules that enabled us to assemble a synthetic *M. genitalium* genome in four stages from chemically synthesized DNA cassettes averaging about 6 kb in size. This was accomplished through a combination of in vitro enzymatic methods and in vivo recombination in *Saccharomyces cerevisiae*. The whole synthetic genome [582,970 base pairs (bp)] was stably grown as a yeast centromeric plasmid (YCp) (7).

Several hurdles were overcome in transplanting and expressing a chemically synthesized chromosome in a recipient cell. We needed to improve methods for extracting intact chromosomes from yeast. We also needed to learn how to transplant these genomes into a recipient bacterial cell to establish a cell controlled only by a synthetic genome. Because *M. genitalium* has an extremely slow growth rate, we turned to two faster-growing mycoplasma species, *M. mycoides* subspecies *capri* (GM12) as donor, and *M. capricolum* subspecies *capricolum* (CK) as recipient.

To establish conditions and procedures for transplanting the synthetic genome out of yeast, we developed methods for cloning entire bacterial chromosomes as centromeric plasmids in yeast, including a native *M. mycoides* genome (8, 9). However, initial attempts to extract the *M. mycoides* genome from yeast and transplant it into *M. capricolum* failed. We discovered that the donor and recipient mycoplasmas share a common restriction system. The donor genome was methylated in the native *M. mycoides* cells and was therefore protected against restriction during the transplantation from a native donor cell (10). However, the bacterial genomes grown in yeast are unmethylated and so are not protected from the single restriction system of the recipient cell. We overcame this restriction barrier by methylating the donor DNA with purified methylases or

crude *M. mycoides* or *M. capricolum* extracts, or by simply disrupting the recipient cell’s restriction system (8).

We now have combined all of our previously established procedures and report the synthesis, assembly, cloning, and successful transplantation of the 1.08-Mbp *M. mycoides* JCVI-syn1.0 genome, to create a new cell controlled by this synthetic genome.

**Synthetic genome design.** Design of the *M. mycoides* JCVI-syn1.0 genome was based on the highly accurate finished genome sequences of two laboratory strains of *M. mycoides* subspecies *capri* GM12 (8, 9, 11). One was the genome donor used by Lartigue *et al.* [GenBank accession CP001621] (10). The other was a strain created by transplantation of a genome that had been cloned and engineered in yeast, YCpMmyc1.1- $\Delta$ typeIIIres [GenBank accession CP001668] (8). This project was critically dependent on the accuracy of these sequences. Although we believe that both finished *M. mycoides* genome sequences are reliable, there are 95 sites at which they differ. We began to design the synthetic genome before both sequences were finished. Consequently, most of the cassettes were designed and synthesized based on the CP001621 sequence (11). When it was finished, we chose the sequence of the genome successfully transplanted from yeast (CP001668) as our design reference (except that we kept the intact typeIIIres gene). All differences that appeared biologically significant between CP001668 and previously synthesized cassettes were corrected to match it exactly (11). Sequence differences between our synthetic cassettes and CP001668 that occurred at 19 sites appeared harmless and so were not corrected. These provide 19 polymorphic differences between our synthetic genome (JCVI-syn1.0) and the natural (nonsynthetic) genome (YCpMmyc1.1) that we have cloned in yeast and use as a standard for genome transplantation from yeast (8). To further differentiate between the synthetic genome and the natural one, we designed four watermark sequences (fig. S1) to replace one or more cassettes in regions experimentally demonstrated [watermarks 1 (1246 bp) and 2 (1081 bp)] or predicted [watermarks 3 (1109 bp) and 4 (1222 bp)] to not interfere with cell viability. These watermark sequences encode unique identifiers while limiting their translation into peptides. Table S1 lists the differences between the synthetic genome and this natural standard. Figure S2 shows a map of the *M. mycoides* JCVI-syn1.0 genome. Cassette and assembly intermediate boundaries, watermarks, deletions, insertions, and genes of the *M. mycoides* JCVI syn1.0 are shown in fig. S2, and the sequence of the transplanted mycoplasma clone sMmYCp235-1 has been submitted to GenBank (accession CP002027).

**Synthetic genome assembly strategy.** The designed cassettes were generally 1080 bp with 80-bp overlaps to adjacent cassettes (11). They were all produced by assembly of chemically

<sup>1</sup>The J. Craig Venter Institute, 9704 Medical Center Drive, Rockville, MD 20850, USA. <sup>2</sup>The J. Craig Venter Institute, 10355 Science Center Drive, San Diego, CA 92121, USA.

\*To whom correspondence should be addressed. E-mail: jcventer@jvci.org

synthesized oligonucleotides by Blue Heron (Bothell, Washington). Each cassette was individually synthesized and sequence-verified by the manufacturer. To aid in the building process, DNA cassettes and assembly intermediates were designed to contain Not I restriction sites at their termini and recombined in the presence of vector elements to allow for growth and selection in yeast (7, 11). A hierarchical strategy was designed to assemble the genome in three stages by transformation and homologous recombination in yeast from 1078 1-kb cassettes (Fig. 1) (12, 13).

**Assembly of 10-kb synthetic intermediates.** In the first stage, cassettes and a vector were recombined in yeast and transferred to *Escherichia*

*coli* (11). Plasmid DNA was then isolated from individual *E. coli* clones and digested to screen for cells containing a vector with an assembled 10-kb insert. One successful 10-kb assembly is represented (Fig. 2A). In general, at least one 10-kb assembled fragment could be obtained by screening 10 yeast clones. However, the rate of success varied from 10 to 100%. All of the first-stage intermediates were sequenced. Nineteen out of 111 assemblies contained errors. Alternate clones were selected, sequence-verified, and moved on to the next assembly stage (11).

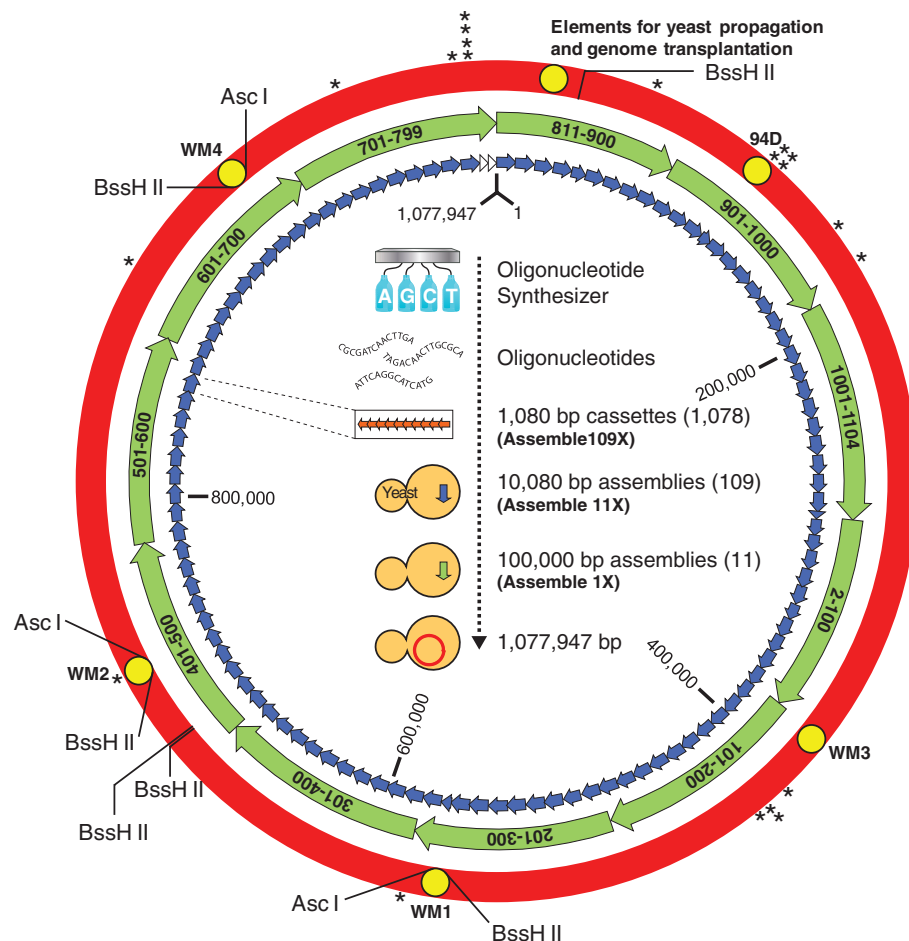
**Assembly of 100-kb synthetic intermediates.** The pooled 10-kb assemblies and their respective cloning vectors were transformed into yeast as

above to produce 100-kb assembly intermediates (11). Our results indicated that these products cannot be stably maintained in *E. coli*, so recombinant DNA had to be extracted from yeast. Multiplex polymerase chain reaction (PCR) was performed on selected yeast clones (fig. S3 and table S2). Because every 10-kb assembly intermediate was represented by a primer pair in this analysis, the presence of all amplicons would suggest an assembled 100-kb intermediate. In general, 25% or more of the clones screened contained all of the amplicons expected for a complete assembly. One of these clones was selected for further screening. Circular plasmid DNA was extracted and sized on an agarose gel alongside a supercoiled marker. Successful second-stage assemblies with the vector sequence are ~105 kb in length (Fig. 2B). When all amplicons were produced following multiplex PCR, a second-stage assembly intermediate of the correct size was usually produced. In some cases, however, small deletions occurred. In other instances, multiple 10-kb fragments were assembled, which produced a larger second-stage assembly intermediate. Fortunately, these differences could easily be detected on an agarose gel before complete genome assembly.

**Complete genome assembly.** In preparation for the final stage of assembly, it was necessary to isolate microgram quantities of each of the 11 second-stage assemblies (11). As reported (14), circular plasmids the size of our second-stage assemblies could be isolated from yeast spheroplasts after an alkaline-lysis procedure. To further purify the 11 assembly intermediates, they were treated with exonuclease and passed through an anion-exchange column. A small fraction of the total plasmid DNA (1/100) was digested with Not I and analyzed by field-inversion gel electrophoresis (FIGE) (Fig. 2C). This method produced ~1 µg of each assembly per 400 ml of yeast culture (~10<sup>11</sup> cells).

The method above does not completely remove all of the linear yeast chromosomal DNA, which we found could substantially decrease the yeast transformation and assembly efficiency. To further enrich for the 11 circular assembly intermediates, ~200 ng samples of each assembly were pooled and mixed with molten agarose. As the agarose solidifies, the fibers thread through and topologically “trap” circular DNA (15). Untrapped linear DNA can then be separated out of the agarose plug by electrophoresis, thus enriching for the trapped circular molecules. The 11 circular assembly intermediates were digested with Not I so that the inserts could be released. Subsequently, the fragments were extracted from the agarose plug, analyzed by FIGE (Fig. 2D), and transformed into yeast spheroplasts (11). In this third and final stage of assembly, an additional vector sequence was not required because the yeast cloning elements were already present in assembly 811-900.

To screen for a complete genome, multiplex PCR was carried out with 11 primer pairs,



**Fig. 1.** The assembly of a synthetic *M. mycoides* genome in yeast. A synthetic *M. mycoides* genome was assembled from 1078 overlapping DNA cassettes in three steps. In the first step, 1080-bp cassettes (orange arrows), produced from overlapping synthetic oligonucleotides, were recombined in sets of 10 to produce 109 ~10-kb assemblies (blue arrows). These were then recombined in sets of 10 to produce 11 ~100-kb assemblies (green arrows). In the final stage of assembly, these 11 fragments were recombined into the complete genome (red circle). With the exception of two constructs that were enzymatically pieced together in vitro (27) (white arrows), assemblies were carried out by in vivo homologous recombination in yeast. Major variations from the natural genome are shown as yellow circles. These include four watermarked regions (WM1 to WM4), a 4-kb region that was intentionally deleted (94D), and elements for growth in yeast and genome transplantation. In addition, there are 20 locations with nucleotide polymorphisms (asterisks). Coordinates of the genome are relative to the first nucleotide of the natural *M. mycoides* sequence. The designed sequence is 1,077,947 bp. The locations of the Asc I and BssH II restriction sites are shown. Cassettes 1 and 800-810 were unnecessary and removed from the assembly strategy (11). Cassette 2 overlaps cassette 1104, and cassette 799 overlaps cassette 811.

designed to span each of the 11 100-kb assembly junctions (table S3). Of 48 colonies screened, DNA extracted from one clone (sMmYCp235) produced all 11 amplicons. PCR of the wild-type positive control (YCpMmyc1.1) produced an indistinguishable set of 11 amplicons (Fig. 3A). To further demonstrate the complete assembly of a synthetic *M. mycoides* genome, intact DNA was isolated from yeast in agarose plugs and subjected to two restriction analyses: Asc I and BssH II (11). Because these restriction sites are present in three of the four watermark sequences, this choice of digestion produces restriction patterns that are distinct from that of the natural *M. mycoides* genome (Figs. 1 and 3B). The sMmYCp235 clone produced the restriction pattern expected for a completely assembled synthetic genome (Fig. 3C).

**Synthetic genome transplantation.** Additional agarose plugs used in the gel analysis above (Fig. 3C) were also used in genome transplantation experiments (11). Intact synthetic *M. mycoides* genomes from the sMmYCp235 yeast clone were transplanted into restriction-minus *M. capricolum* recipient cells, as described (8). Results were scored by selecting for growth of blue colonies on SP4 medium containing tetracycline and X-gal at 37°C. Genomes isolated from this yeast clone produced 5 to 15 tetracycline-resistant blue colonies per agarose plug, a number comparable to that produced by the YCpMmyc1.1 control. Recovery of colonies in all transplantation experiments was dependent on the presence of both *M. capricolum* recipient cells and an *M. mycoides* genome.

**Semisynthetic genome assembly and transplantation.** To aid in testing the functionality of each 100-kb synthetic segment, semisynthetic genomes were constructed and transplanted. By mixing natural pieces with synthetic ones, the successful construction of each synthetic 100-kb assembly could be verified without having to sequence these intermediates. We cloned 11 overlapping natural 100-kb assemblies in yeast by using a previously described method (16). In 11 parallel reactions, yeast cells were cotransformed with fragmented *M. mycoides* genomic DNA (YCpMmyc1.1) that averaged ~100 kb in length and a PCR-amplified vector designed to overlap the ends of the 100-kb inserts. To maintain the appropriate overlaps so that natural and synthetic fragments could be recombined, the PCR-amplified vectors were produced via primers with the same 40-bp overlaps used to clone the 100-kb synthetic assemblies. The semisynthetic genomes that were constructed contained between 2 and 10 of the 11 100-kb synthetic subassemblies (Table 1). The production of viable colonies produced after transplantation confirmed that the synthetic fraction of each genome contained no lethal mutations. Only one of the 100-kb subassemblies, 811-900, was not viable.

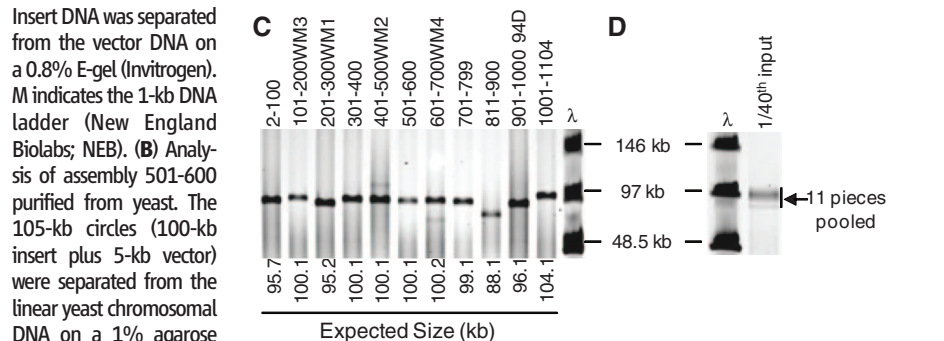
Initially, an error-containing 811-820 clone was used to produce a synthetic genome that did not transplant. This was expected because the error was a single-base pair deletion that creates a

frameshift in *dnaA*, an essential gene for chromosomal replication. We were previously unaware of this mutation. By using a semisynthetic genome construction strategy, we pinpointed 811-900 as the source for failed synthetic transplantation experiments. Thus, we began to reassemble an error-free 811-900 assembly, which was used to

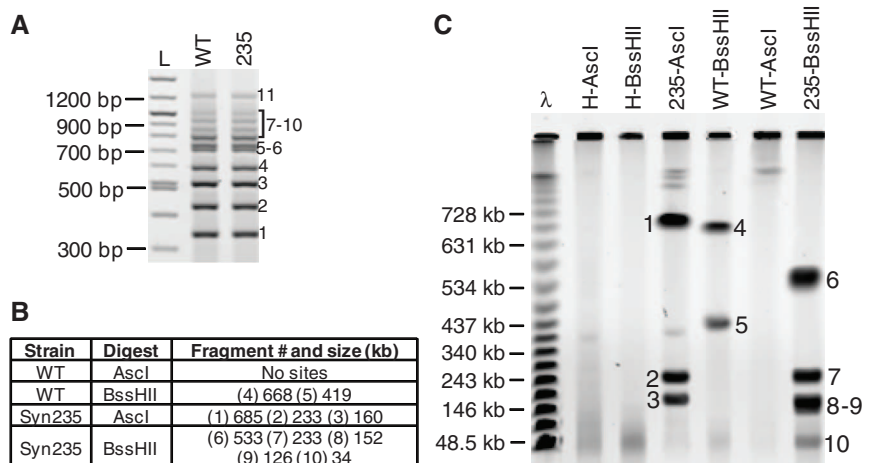
produce the sMmYCp235 yeast strain. The *dnaA*-mutated genome differs by only one nucleotide from the synthetic genome in sMmYCp235. This genome served as a negative control in our transplantation experiments. The *dnaA* mutation was also repaired at the 811-900 level by genome engineering in yeast (17). A repaired 811-900

**Fig. 2.** Analysis of the assembly intermediates.

(A) Not I and Sbf I double restriction digestion analysis of assembly 341-350 purified from *E. coli*. These restriction enzymes release the vector fragments (5.5 and 3.4 kb) from the 10-kb insert. Insert DNA was separated from the vector DNA on a 0.8% E-gel (Invitrogen). M indicates the 1-kb DNA ladder (New England Biolabs; NEB). (B) Analysis of assembly 501-600 purified from yeast. The 105-kb circles (100-kb insert plus 5-kb vector) were separated from the linear yeast chromosomal DNA on a 1% agarose gel by applying 4.5 V/cm for 3 hours. S indicates the BAC-Tracker supercoiled DNA ladder (Epicentre). (C) Not I restriction digestion analysis of the 11 ~100-kb assemblies purified from yeast. These DNA fragments were analyzed by FIGE on a 1% agarose gel. The expected insert size for each assembly is indicated.  $\lambda$  indicates the lambda ladder (NEB). (D) Analysis of the 11 pooled assemblies shown in (C) following topological trapping of the circular DNA and Not I digestion. One-fortieth of the DNA used to transform yeast is represented.



for 3 hours. S indicates the BAC-Tracker supercoiled DNA ladder (Epicentre). (C) Not I restriction digestion analysis of the 11 ~100-kb assemblies purified from yeast. These DNA fragments were analyzed by FIGE on a 1% agarose gel. The expected insert size for each assembly is indicated.  $\lambda$  indicates the lambda ladder (NEB). (D) Analysis of the 11 pooled assemblies shown in (C) following topological trapping of the circular DNA and Not I digestion. One-fortieth of the DNA used to transform yeast is represented.



**Fig. 3.** Characterization of the synthetic genome isolated from yeast. (A) Yeast clones containing a completely assembled synthetic genome were screened by multiplex PCR with a primer set that produces 11 amplicons; one at each of the 11 assembly junctions. Yeast clone sMmYCp235 (235) produced the 11 PCR products expected for a complete genome assembly. For comparison, the natural genome extracted from yeast (WT, wild type) was also analyzed. PCR products were separated on a 2% E-gel (Invitrogen). L indicates the 100-bp ladder (NEB). (B) The sizes of the expected Asc I and BssH II restriction fragments for natural (WT) and synthetic (Syn235) *M. mycoides* genomes. (C) Natural (WT) and synthetic (235) *M. mycoides* genomes were isolated from yeast in agarose plugs. In addition, DNA was purified from the host strain alone (H). Agarose plugs were digested with Asc I or BssH II, and fragments were separated by clamped homogeneous electrical field (CHEF) gel electrophoresis. Restriction fragments corresponding to the correct sizes are indicated by the fragment numbers shown in (B).

assembly was used in a final-stage assembly to produce a yeast clone with a repaired genome. This yeast clone is named sMmYCP142 and could be transplanted. A complete list of genomes that have been assembled from 11 pieces and successfully transplanted is provided in Table 1.

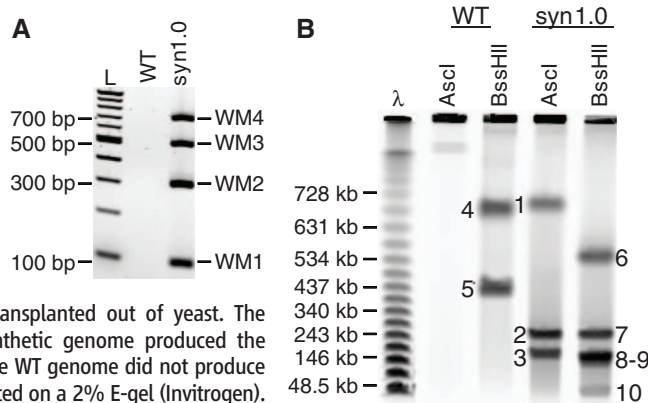
#### Characterization of the synthetic transplants.

To rapidly distinguish the synthetic transplants from *M. capricolum* or natural *M. mycooides*, two analyses were performed. First, four primer pairs that are specific to each of the four watermarks were designed such that they produce four amplicons in a single multiplex PCR reaction (table S4). All four amplicons were produced by transplants generated from sMmYCP235, but not YCPmmyc1.1 (Fig. 4A). Second, the gel analysis with Asc I and BssH II, described above (Fig. 3C), was performed. The restriction pattern obtained was consistent with a transplant produced from a synthetic *M. mycooides* genome (Fig. 4B).

**Table 1.** Genomes that have been assembled from 11 pieces and successfully transplanted. Assembly 2-100, 1; assembly 101-200, 2; assembly 201-300, 3; assembly 301-400, 4; assembly 401-500, 5; assembly 501-600, 6; assembly 601-700, 7; assembly 701-799, 8; assembly 811-900, 9; assembly 901-1000, 10; assembly 1001-1104, 11. WM, watermarked assembly.

Genome assembly	Synthetic fragments	Natural fragments
Reconstituted natural genome	None	1-11
2/11 semisynthetic genome with one watermark	5 WM, 10	1-4, 6-9, 11
8/11 semisynthetic genome without watermarks	1-4, 6-8, 11	5, 9, 10
9/11 semisynthetic genome without watermarks	1-4, 6-8, 10-11	5, 9
9/11 semisynthetic genome with three watermarks	1, 2 WM, 3 WM, 4, 6, 7 WM, 8, 10-11	5, 9
10/11 semisynthetic genome with three watermarks	1, 2 WM, 3 WM, 4, 5 WM, 6, 7 WM, 8, 10-11	9
11/11 synthetic genome, 811-820 correction of <i>dnaA</i>	1, 2 WM, 3 WM, 4, 5 WM, 6, 7 WM, 8, 9-11	None
11/11 synthetic genome, 811-900 correction of <i>dnaA</i>	1, 2 WM, 3 WM, 4, 5 WM, 6, 7 WM, 8, 9-11	None

**Fig. 4.** Characterization of the transplants. (A) Transplants containing a synthetic genome were screened by multiplex PCR with a primer set that produces four amplicons, one internal to each of the four watermarks. One transplant (syn1.0) originating from yeast clone sMmYCP235 was analyzed alongside a natural, nonsynthetic genome (WT) transplanted out of yeast. The transplant containing the synthetic genome produced the four PCR products, whereas the WT genome did not produce any. PCR products were separated on a 2% E-gel (Invitrogen). (B) Natural (WT) and synthetic (syn1.0) *M. mycooides* genomes were isolated from *M. mycooides* transplants in agarose plugs. Agarose plugs were digested with Asc I or BssH II and fragments were separated by CHEF gel electrophoresis. Restriction fragments corresponding to the correct sizes are indicated by the fragment numbers shown in Fig. 3B.



was a complete replacement of the *M. capricolum* genome by our synthetic genome during the transplant process.

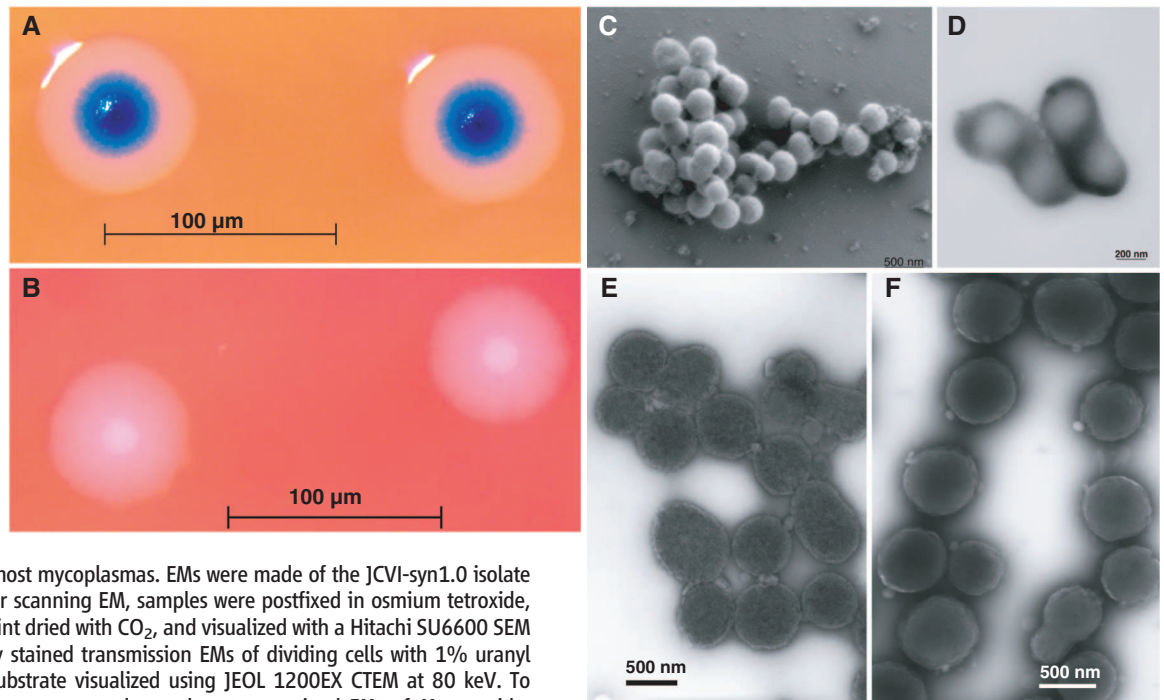
The cells with only the synthetic genome are self-replicating and capable of logarithmic growth. Scanning and transmission electron micrographs (EMs) of *M. mycooides* JCVI-syn1.0 cells show small, ovoid cells surrounded by cytoplasmic membranes (Fig. 5, C to F). Proteomic analysis of *M. mycooides* JCVI-syn1.0 and the wild-type control (YCPmmyc1.1) by two-dimensional gel electrophoresis revealed almost identical patterns of protein spots (fig. S4) that differed from those previously reported for *M. capricolum* (10). Fourteen genes are deleted or disrupted in the *M. mycooides* JCVI-syn1.0 genome; however, the rate of appearance of colonies on agar plates and the colony morphology are similar (compare Fig. 5, A and B). We did observe slight differences in the growth rates in a color-changing unit assay, with the JCVI-syn1.0 transplants growing slightly faster than the MmcyYCP1.1 control strain (fig. S6).

**Discussion.** In 1995, the quality standard for sequencing was considered to be one error in 10,000 bp, and the sequencing of a microbial genome required months. Today, the accuracy is substantially higher. Genome coverage of 30 to 50 $\times$  is not unusual, and sequencing only requires a few days. However, obtaining an error-free genome that could be transplanted into a recipient cell to create a new cell controlled only by the synthetic genome was complicated and required many quality-control steps. Our success was thwarted for many weeks by a single-base pair deletion in the essential gene *dnaA*. One wrong base out of more than 1 million in an essential gene rendered the genome inactive, whereas major genome insertions and deletions in nonessential parts of the genome had no observable effect on viability. The demonstration that our synthetic genome gives rise to transplants with the characteristics of *M. mycooides* cells implies that the DNA sequence on which it is based is accurate enough to specify a living cell with the appropriate properties.

Our synthetic genomic approach stands in sharp contrast to various other approaches to genome engineering that modify natural genomes by introducing multiple insertions, substitutions, or deletions (18-22). This work provides a proof of principle for producing cells based on computer-designed genome sequences. DNA sequencing of a cellular genome allows storage of the genetic instructions for life as a digital file. The synthetic genome described here has only limited modifications from the naturally occurring *M. mycooides* genome. However, the approach we have developed should be applicable to the synthesis and transplantation of more novel genomes as genome design progresses (23).

We refer to such a cell controlled by a genome assembled from chemically synthesized pieces of DNA as a "synthetic cell," even though the cytoplasm of the recipient cell is not synthetic. Phenotypic effects of the recipient cytoplasm are diluted with protein turnover and as cells carrying only the

**Fig. 5.** Images of *M. mycoides* JCVI-syn1.0 and WT *M. mycoides*. To compare the phenotype of the JCVI-syn1.0 and non-YCp WT strains, we examined colony morphology by plating cells on SP4 agar plates containing X-gal. Three days after plating, the JCVI-syn1.0 colonies are blue because the cells contain the *lacZ* gene and express  $\beta$ -galactosidase, which converts the X-gal to a blue compound (A). The WT cells do not contain *lacZ* and remain white (B). Both cell types have the fried egg colony morphology characteristic of most mycoplasmas. EMs were made of the JCVI-syn1.0 isolate using two methods. (C) For scanning EM, samples were postfixed in osmium tetroxide, dehydrated and critical point dried with CO<sub>2</sub>, and visualized with a Hitachi SU6600 SEM at 2.0 keV. (D) Negatively stained transmission EMs of dividing cells with 1% uranyl acetate on pure carbon substrate visualized using JEOL 1200EX CTEM at 80 keV. To examine cell morphology, we compared uranyl acetate-stained EMs of *M. mycoides* JCVI-syn1.0 cells (E) with EMs of WT cells made in 2006 that were stained with ammonium molybdate (F). Both cell types show the same ovoid morphology and general appearance. EMs were provided by T. Deerinck and M. Ellisman of the National Center for Microscopy and Imaging Research at the University of California at San Diego.



transplanted genome replicate. Following transplantation and replication on a plate to form a colony (>30 divisions or >10<sup>9</sup>-fold dilution), progeny will not contain any protein molecules that were present in the original recipient cell (10, 24). This was previously demonstrated when we first described genome transplantation (10). The properties of the cells controlled by the assembled genome are expected to be the same as if the whole cell had been produced synthetically (the DNA software builds its own hardware).

The ability to produce synthetic cells renders it essential for researchers making synthetic DNA constructs and cells to clearly watermark their work to distinguish it from naturally occurring DNA and cells. We have watermarked the synthetic chromosome in this and our previous study (7).

If the methods described here can be generalized, design, synthesis, assembly, and transplantation of synthetic chromosomes will no longer be a barrier to the progress of synthetic biology. We expect that the cost of DNA synthesis will follow what has happened with DNA sequencing and continue to exponentially decrease. Lower synthesis costs combined with automation will enable broad applications for synthetic genomics.

We have been driving the ethical discussion concerning synthetic life from the earliest stages of this work (25, 26). As synthetic genomic applications expand, we anticipate that this work will continue to raise philosophical issues that have broad societal and ethical implications. We encourage the continued discourse.

#### References and Notes

1. F. Sanger *et al.*, *Nature* **265**, 687 (1977).
2. R. D. Fleischmann *et al.*, *Science* **269**, 496 (1995).
3. J. C. Venter, *Nature* **464**, 676 (2010).
4. C. A. Hutchison III *et al.*, *Science* **286**, 2165 (1999).
5. J. I. Glass *et al.*, *Proc. Natl. Acad. Sci. U.S.A.* **103**, 425 (2006).
6. H. O. Smith, J. I. Glass, C. A. Hutchison III, J. C. Venter, in *Accessing Uncultivated Microorganisms: From the Environment to Organisms and Genomes and Back*, K. Zengler, Ed. (American Society for Microbiology, Washington, DC, 2008), p. 320.
7. D. G. Gibson *et al.*, *Science* **319**, 1215 (2008).
8. C. Lartigue *et al.*, *Science* **325**, 1693 (2009).
9. G. A. Benders *et al.*, *Nucleic Acids Res.* **38**, 2558 (2010).
10. C. Lartigue *et al.*, *Science* **317**, 632 (2007).
11. Supporting material is available on Science Online.
12. D. G. Gibson, *Nucleic Acids Res.* **37**, 6984 (2009).
13. D. G. Gibson *et al.*, *Proc. Natl. Acad. Sci. U.S.A.* **105**, 20404 (2008).
14. R. J. Devenish, C. S. Newlon, *Gene* **18**, 277 (1982).
15. W. W. Dean, B. M. Dancis, C. A. Thomas Jr., *Anal. Biochem.* **56**, 417 (1973).
16. S.-H. Leem *et al.*, *Nucleic Acids Res.* **31**, e29 (2003).
17. V. N. Noskov, T. H. Segall-Shapiro, R. Y. Chuang, *Nucleic Acids Res.* **38**, 2570 (2010).
18. M. Itaya, K. Tsuge, M. Koizumi, K. Fujita, *Proc. Natl. Acad. Sci. U.S.A.* **102**, 15971 (2005).
19. M. Itaya, *FEBS Lett.* **362**, 257 (1995).
20. H. Mizoguchi, H. Mori, T. Fujio, *Biotechnol. Appl. Biochem.* **46**, 157 (2007).
21. J. Y. Chun *et al.*, *Nucleic Acids Res.* **35**, e40 (2007).
22. H. H. Wang *et al.*, *Nature* **460**, 894 (2009).
23. A. S. Khalil, J. J. Collins, *Nat. Rev. Genet.* **11**, 367 (2010).
24. A mycoplasma cell, with a mass of about 10<sup>-13</sup> g, contains fewer than 10<sup>5</sup> molecules of protein. (If it contains 20% protein, this is equivalent to 2 × 10<sup>-14</sup> g of protein per cell. At a molecular mass of 120 daltons per amino acid residue, each cell contains (2 × 10<sup>-14</sup>)/120 = 1.7 × 10<sup>-16</sup> mol of peptide residues. This is equivalent to (1.7 × 10<sup>-16</sup>) × (6 × 10<sup>23</sup>) = 1 × 10<sup>8</sup> residues per cell. If the average size of a protein is 300 residues, then a cell contains about 3 × 10<sup>5</sup> protein molecules.) After 20 cell divisions the number of progeny exceeds the total number of protein molecules in the recipient cell. So, following transplantation and replication to form a colony on a plate, most cells will contain no protein molecules that were present in the original recipient cell.
25. M. K. Cho, D. Magnus, A. L. Caplan, D. McGee, *Science* **286**, 2087, 2089 (1999).
26. M. S. Garfinkel, D. Endy, G. L. Epstein, R. M. Friedman, *Biosecur. Bioterror.* **5**, 359 (2007).
27. D. G. Gibson *et al.*, *Nat. Methods* **6**, 343 (2009).
28. We thank Synthetic Genomics, Inc. for generous funding of this work. We thank J. B. Hostetler, D. Radune, N. B. Fedorova, M. D. Kim, B. J. Szczypinski, I. K. Singh, J. R. Miller, S. Kaushal, R. M. Friedman, and J. Mulligan for their contributions to this work. Electron micrographs were generously provided by T. Deerinck and M. Ellisman of the National Center for Microscopy and Imaging Research at the University of California at San Diego. J.C.V. is chief executive officer and co-chief scientific officer of SGI. H.O.S. is co-chief scientific officer and on the Board of Directors of SGI. C.A.H. is chairman of the SGI Scientific Advisory Board. All three of these authors and JCVI hold SGI stock. JCVI has filed patent applications on some of the techniques described in this paper.

#### Supporting Online Material

www.sciencemag.org/cgi/content/full/science.1190719/DC1  
Materials and Methods

Figs. S1 to S6  
Tables S1 to S7  
References

9 April 2010; accepted 13 May 2010

Published online 20 May 2010;

10.1126/science.1190719

Include this information when citing this paper.