

Functional partitioning of a liquid-like organelle during assembly of axonemal dyneins

Chanjae Lee¹, Rachael M Cox¹, Ophelia Papoulas¹, Amjad Horani², Kevin Drew¹, Caitlin C Devitt¹, Steven L Brody³, Edward M Marcotte^{1*}, John B Wallingford^{1*}

¹Department of Molecular Biosciences, University of Texas, Austin, United States;

²Department of Pediatrics, Washington University School of Medicine, St. Louis, United States;

³Department of Medicine, Washington University School of Medicine, St. Louis, United States

Abstract Ciliary motility is driven by axonemal dyneins that are assembled in the cytoplasm before deployment to cilia. Motile ciliopathy can result from defects in the dyneins themselves or from defects in factors required for their cytoplasmic pre-assembly. Recent work demonstrates that axonemal dyneins, their specific assembly factors, and broadly-acting chaperones are concentrated in liquid-like organelles in the cytoplasm called DynAPs (Dynein Axonemal Particles). Here, we use *in vivo* imaging in *Xenopus* to show that inner dynein arm (IDA) and outer dynein arm (ODA) subunits are partitioned into non-overlapping sub-regions within DynAPs. Using affinity-purification mass-spectrometry of *in vivo* interaction partners, we also identify novel partners for inner and outer dynein arms. Among these, we identify C16orf71/Daap1 as a novel axonemal dynein regulator. Daap1 interacts with ODA subunits, localizes specifically to the cytoplasm, is enriched in DynAPs, and is required for the deployment of ODAs to axonemes. Our work reveals a new complexity in the structure and function of a cell-type specific liquid-like organelle that is directly relevant to human genetic disease.

***For correspondence:**

marcotte@icmb.utexas.edu
(EMM);

wallingford@austin.utexas.edu
(JBW)

Competing interests: The authors declare that no competing interests exist.

Funding: See page 18

Received: 07 May 2020

Accepted: 01 December 2020

Published: 02 December 2020

Reviewing editor: Andrew P Carter, MRC Laboratory of Molecular Biology, United Kingdom

© Copyright Lee et al. This article is distributed under the terms of the [Creative Commons Attribution License](https://creativecommons.org/licenses/by/4.0/), which permits unrestricted use and redistribution provided that the original author and source are credited.

Introduction

Motile cilia are microtubule-based cellular projections and their oriented beating generates fluid flows that are critical for development and homeostasis. Ciliary beating is driven by a complex set of axoneme-specific dynein motors that drive sliding of the axonemal microtubule doublets. Based on their relative positions within the axoneme, these motors are classified as either outer dynein arms (ODAs) or inner dynein arms (IDAs) (**Figure 1A**, upper inset), the former driving ciliary beating generally, and the latter tuning the waveform (**Kamiya and Yagi, 2014; King, 2018**). Mutations in genes encoding ODA or IDA subunits are the major cause of the motile ciliopathy syndrome known as primary ciliary dyskinesia (PCD; MIM 244400). This genetic disease results in repeated sinopulmonary disease, bronchiectasis, cardiac defects, situs anomalies, and infertility (**Horani et al., 2016; Mitchison and Valente, 2017; Wallmeier et al., 2020**). Interestingly, PCD can also result from mutations in genes encoding any of several cytoplasmic proteins collectively known as Dynein Axonemal Assembly Factors (DNAAFs) (**Desai et al., 2018; Fabczak and Osinka, 2019**).

Axonemal dynein motors were known to be pre-assembled in the cytoplasm before deployment to cilia (**Fowkes and Mitchell, 1998**), but the first description of DNAAFs came later, with the identification of *KTU* (aka *DNAAF2*) (**Omran et al., 2008**). Studies of motile ciliopathy patients have now defined an array of cytoplasmic DNAAFs that are never part of the axoneme, yet when mutated result in loss of axonemal dyneins, and in turn, defective cilia beating (**Diggle et al., 2014; Horani et al., 2012; Horani et al., 2013; Kott et al., 2012; Mitchison et al., 2012; Moore et al.,**

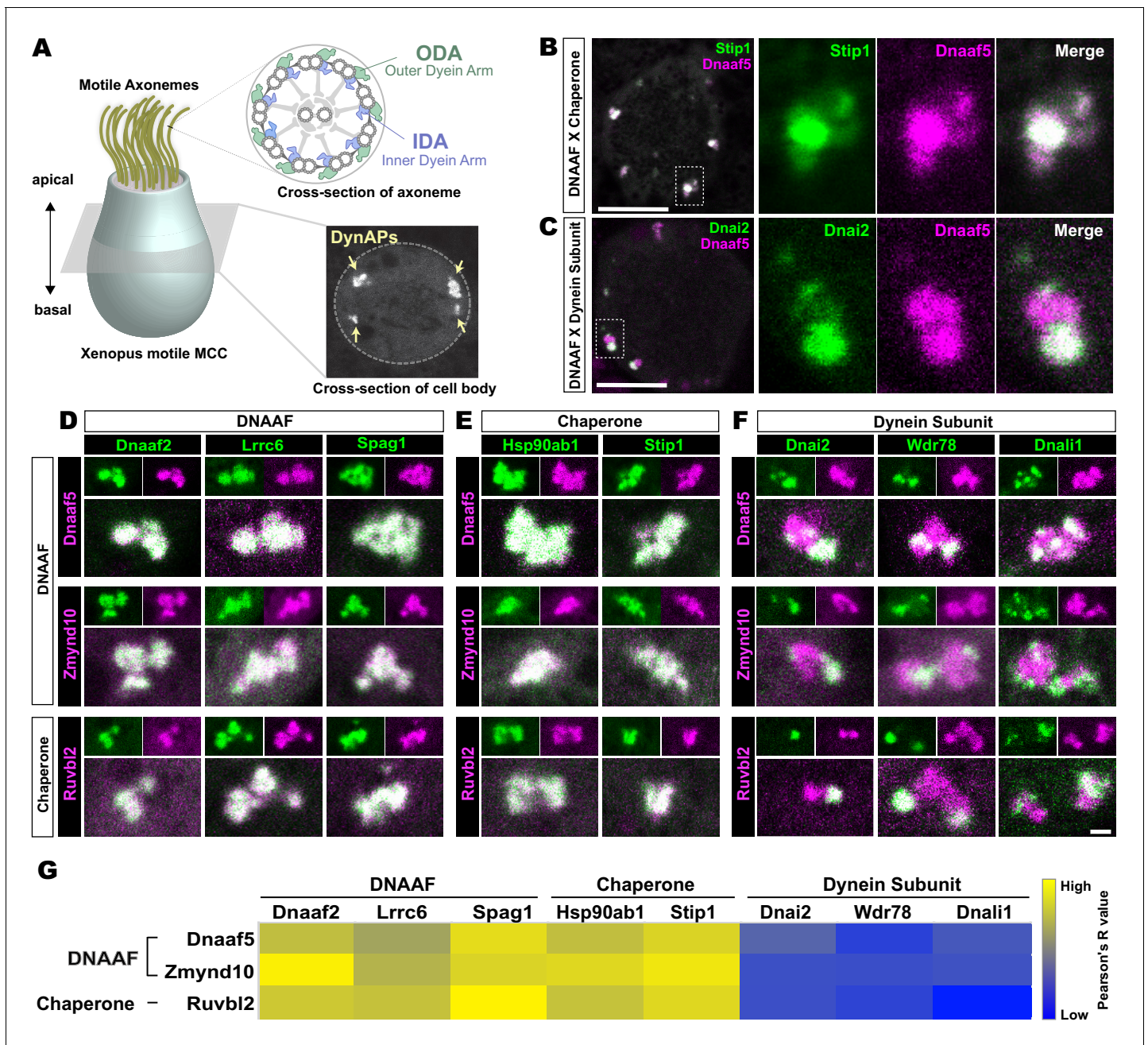


Figure 1. Dynein subunits occupy sub-regions within DynAPs. (A) Schematic showing an MCC. The upper inset shows a schematic cross section through an axoneme indicating the relative positions of ODAs and IDAs; the lower inset shows a representative *en face* optical section through the MCC cytoplasm with dynAPs indicated DynAPs. (B) *En face optical* section through the cytoplasm of a *Xenopus* MCC expressing GFP-Stip1 (a chaperone, green) and mCherry-Dnaaf5 (a DNAAF, magenta). Note near-perfect co-localization. Dashed box indicates region shown in high magnification, split-channel views at right. Scale bars = 10 μ m. (C) GFP-Dnai2 (a dynein subunit, green) co-localizes only partially with mCherry-Dnaaf5. (D, E) Images showing enlarged views of individual DynAPs after pairwise labeling with the indicated tagged DNAAFs or chaperones. Smaller panels show split channels, larger images show the merged channels. Note high degree of co-localization. (F) Similar pair-wise labeling with dynein subunits reveals only partial co-localization. Scale bar = 1 μ m for panels D-F. (G) Heatmap showing Pearson correlation for colocalization of GFP fusion proteins with mCherry fusion proteins. Yellow indicates high value (Pearson's R value = 0.85), while blue indicates low value (Pearson's R value = 0.45). Exact Pearson's R values for each protein combination can be found in **Figure 1—figure supplement 1**. The online version of this article includes the following figure supplement(s) for figure 1:

Figure supplement 1. Quantification of localization data.

2013; UK10K Rare Group et al., 2017; Paff et al., 2017; UK10K et al., 2013; Zariwala et al., 2013). These specialized DNaAFs are now known to act in concert with ubiquitous, broadly-acting chaperones of the Heat Shock Protein (Hsp) Family (Cho et al., 2018; Li et al., 2017; Mali et al., 2018; UK10K Rare Group et al., 2017; Omran et al., 2008; Paff et al., 2017; UK10K et al., 2013; Yamaguchi et al., 2018; Yamamoto et al., 2010; Zhao et al., 2013; Zur Lage et al., 2018).

How DNaAFs organize the assembly of axonemal dyneins is a complex question, as each axoneme contains an series of closely related multiprotein complexes (King, 2018). For example, ODAs and IDAs incorporate diverse heavy, intermediate, and light chains encoded by distinct genes; few subunits are shared. Moreover, at least eight distinct IDA sub-types and two ODA sub-types have been described (Dougherty et al., 2016; Fliegau et al., 2005; King, 2018). Generally, disruption of any single DNaAF has been found to impact both ODAs and IDAs (Fabczak and Osinka, 2019), but a recent study suggests that distinct DNaAFs may be dedicated for the assembly of specific subsets of dyneins (Yamaguchi et al., 2018). Another recent study has suggested that distinct DNaAFs may catalyze specific stages of the dynein assembly process (Mali et al., 2018). This complexity motivates another key question, this one regarding the spatial organization of axonemal dynein assembly.

Several studies indicated that the DNaAFs and chaperones act together in cytosolic foci (Diggle et al., 2014; Horani et al., 2012; Li et al., 2017; Mali et al., 2018), and we recently demonstrated that DNaAFs, chaperones, and axonemal dynein subunits are sequestered in specialized membrane-less organelles that we termed DynAPs (Huizar et al., 2018). DynAPs are multiciliated cell (MCC)-specific organelles that display hallmarks of biological phase separation, with DNaAFs and chaperones fluxing through rapidly while dynein subunits are stably retained (Huizar et al., 2018). Though DynAPs display properties similar to many ubiquitous liquid-like organelles (Banani et al., 2017; Shin and Brangwynne, 2017), little else is known of the cell biology underlying DynAP assembly or function.

We show here that DynAPs contain functionally distinct sub-compartments. Confocal imaging revealed that the organelles defined by enrichment of DNaAFs and/or chaperones are sub-divided into sub-compartments specifically enriched for ODA or IDA subunits. Affinity-purification and mass-spectrometry of IDA and ODA subunits from MCCs identified several novel interactors, including the uncharacterized protein Daap1/C16orf71. We show that Daap1 is a cytoplasmic protein that is enriched in DynAPs in both human and *Xenopus* MCCs. Moreover, Daap1 localization is restricted to the ODA sub-region of DynAPs, where assays of fluorescence recovery after photobleaching (FRAP) show it is stably retained. Finally, disruption of Daap1 elicits a severe loss of ODAs from motile cilia. These data provide new insights into the structure and function of a still poorly defined, cell-type specific, disease-associated organelle.

Results

Outer and inner arm dynein subunits occupy sub-regions within DynAPs

The *Xenopus* embryo epidermis is a mucociliary epithelium that serves as a highly tractable model for understanding motile cilia (Hayes et al., 2007; Walentek and Quigley, 2017; Werner and Mitchell, 2012). Using this system, we previously showed that while DNaAFs, chaperones, and dyneins all co-localize in DynAPs with the canonical DNaAF, Ktu/Dnaaf2, dynein subunits displayed relatively more variable co-localization (Huizar et al., 2018). Here, we explored these localization patterns in more detail by pairwise co-expression of several fluorescently tagged DNaAFs, Hsp chaperones, and axonemal dynein subunits. We examined their localization in *en face* optical sections through the cytoplasm of *Xenopus* MCCs *in vivo* using confocal microscopy (Figure 1A, lower inset).

We found, for example, that the Hsp co-chaperone Stip1/Hop displayed essentially total co-localization with the assembly factor Dnaaf5/Heatr2 (Figure 1B), while by contrast, the outer dynein arm subunit Dnai2 clearly displayed only partial overlap with Dnaaf5 (Figure 1C). In fact, pairwise tests of five distinct DNaAFs and three chaperones revealed consistent, strong co-localization in all combinations (Figure 1D,E,G). Conversely, pairwise tests with three different axonemal dynein subunits consistently revealed only partial co-localization (Figure 1F,G). In all cases, IDA or ODA subunits occupied distinct, well-demarcated sub-regions within DNaAF- or chaperone-labeled DynAPs

(Figure 1F). Pearson correlations revealed that these differences were statistically significant (Figure 1—figure supplement 1).

We then performed pairwise tests of co-localization of several axonemal dynein subunits. Strikingly, we found that IDAs and ODAs were partitioned into mutually exclusive sub-regions. For example, the ODA subunit Dnai2 displayed near-perfect co-localization with two additional ODA subunits, Dnai1 and Dnal4 (Figure 2A,B). By contrast, Dnai2 displayed very little colocalization with IDA-f subunit Wdr78 or the IDA-a, c, d subunit Dnali1 (Figure 2C,D; Figure 2—figure supplement 1A, B). Again, Pearson correlations revealed these differences to be highly significant (Figure 2—figure supplement 1C).

Specific sub-classes of inner dynein arms are partitioned to distinct sub-compartments within DynAPs

We further observed that the different sub-classes of IDAs were also restricted to discrete sub-regions within DynAPs. For example, the IDA-a, c, d subunit Dnali1 and the IDA-f subunit Wdr78 displayed only very little co-localization (Figure 2E; Figure 2—figure supplement 1D). By contrast, Wdr78 displayed significantly stronger co-localized with another IDA-f subunit, Tctex1d2 (Figure 2F; Figure 2—figure supplement 1D).

Together, these data suggest that axonemal dynein subunits are partitioned into functionally distinct sub-regions; based upon their contents, with ODAs, and at least two sub-classes of IDAs

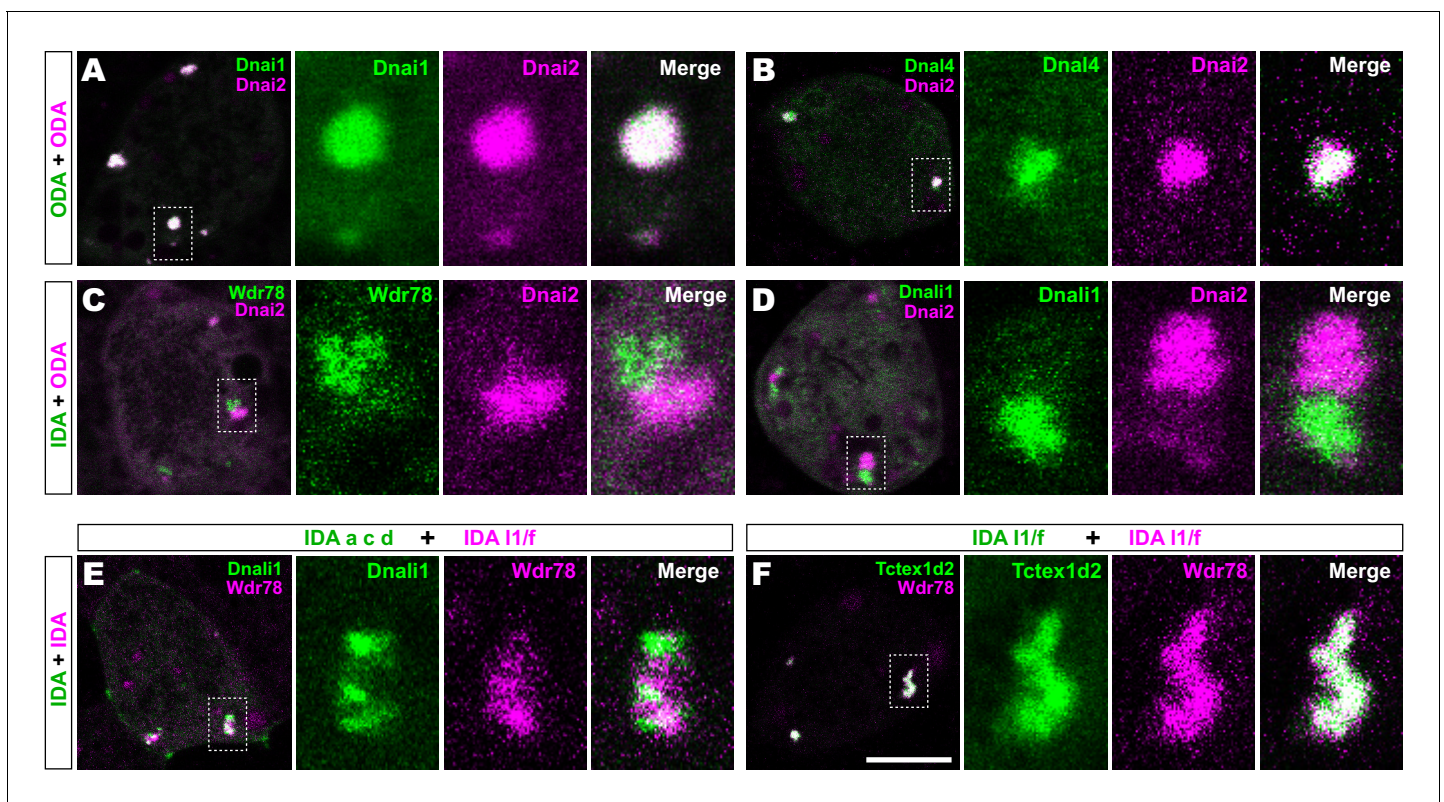


Figure 2. Outer and inner dynein arms localize to distinct sub-regions in DynAPs. (A) *En face* optical section of a *Xenopus* MCC expressing ODA subunits GFP-Dnai1 and mCherry-Dnai2 (as per lower inset in Figure 1A). The dashed box indicates the area shown at higher magnification in the panels to the right. Note near complete co-localization. (B) mCherry-Dnai2 also displays near-total co-localization with another ODA subunit, Dnal4. (C, D) mCherry-Dnai2 shows very little co-localization with the IDA subunit GFP-Wdr78 or GFP-Dnali1. (E) IDA-f subunit mCherry-Wdr78 displays little co-localization with IDA-a, c, d subunit GFP-Dnali1. (F) IDA-f subunits, mCherry-Wdr78 and GFP-Tctex1d2, show complete co-localization. Scale bar = 10 μm.

The online version of this article includes the following figure supplement(s) for figure 2:

Figure supplement 1. Co-localization data for IDAs and ODAs in DynAPs.

occupying functionally-related restricted spaces within DynAPs. We will refer to these here as 'ODA sub-DynAPs' and 'IDA-f sub-DynAPs,' etc.

Affinity-purification and mass-spectrometry identifies specific *in vivo* interactors for vertebrate inner and outer dynein arm subunits in *Xenopus* MCCs

Given the essential role of cytoplasmic DNAAFs and chaperones in assembly of axonemal dyneins (Desai et al., 2018; Fabczak and Osinka, 2019), we reasoned that sub-DynAPs may also contain regulatory factors with specific roles in the assembly or deployment of either IDAs or ODAs. To test this idea, we sought to determine the interactomes of IDAs and ODAs directly in MCCs. We therefore developed a method to perform affinity-purification and mass-spectrometry (APMS) of *in vivo* interaction partners using *Xenopus* mucociliary epithelium and then examined the localization of interaction partners using *in vivo* imaging.

For this experiment, we took advantage of organotypically cultured explants of pluripotent ectoderm from early *Xenopus* embryos (so-called 'animal caps'), which can be differentiated into a wide array of organs and tissues, including mucociliary epithelium (Ariizumi et al., 2009; Walentek and Quigley, 2017; Werner and Mitchell, 2012). We and others have used such explants previously for large-scale genomic studies of ciliogenesis and cilia function (Chung et al., 2014; Kim et al., 2018; Ma et al., 2014; Quigley and Kintner, 2017; Walentek et al., 2016).

As baits for APMS, we used GFP-fusions to either IDA or ODA subunits, expressing them specifically in MCCs using a well-defined MCC-specific α -tubulin promoter (Deblandre et al., 1999; Tu et al., 2018). For each experiment, we excised ~550 animal caps and cultured them until MCCs developed beating cilia (NF stage 23)(Figure 3A, green, blue arrows). Protein was isolated from these tissue explants and APMS was performed using an anti-GFP antibody (Figure 3A). To control for non-specific interactions, each APMS experiment was accompanied by a parallel APMS experiment (i.e. from explants cut from the same clutch of embryos) using un-fused GFP (Figure 3A, gray). The results of the latter experiment were then used to subtract background (Figure 3A, right; see Materials and methods), and we calculated a Z-test, fold-change, and a false discovery rate for differential enrichment of identified proteins (see Materials and methods).

To identify ODA interactors, we used GFP-Dnai2; for IDAs we used GFP-Wdr78 (King, 2018).

For both proteins, we found that the bait itself was the most strongly enriched hit in the APMS, providing an important positive control (Circled in Figure 3—figure supplement 1C, E; see Supplementary files 1, 2). Dnai2 pulldown strongly enriched for known ODA-specific sub-units, including the intermediate chain Dnai1, the heavy chains Dnah9/11, and the light chain Tctex1d1, among others (Figure 3B; Figure 3—figure supplement 1A–C; Supplementary file 1). Conversely, our Wdr78 sample was enriched for IDA components, specifically the IDA-f subtype, as expected (Figure 3C); these included the axonemal dynein heavy chains Dnah2 and Dnah10, as well as several light and intermediate chains (Figure 3C; Figure 3—figure supplement 1D–F; Supplementary file 2).

Finally, we identified weaker but significant interaction of Dnai2 and Wdr78 with a variety of known chaperones and assembly factors, including Ruvbl1/2, Spag1, and Dnaaf1 (Supplementary files 1, 2), consistent with findings that these proteins are enriched in DynAPs and are essential for axonemal dynein assembly (Fabczak and Osinka, 2019; Huizar et al., 2018). Our data provide new insights into the compositions of ODAs and f-type IDAs in *Xenopus* MCCs and also serve as positive controls for the specificity of our APMS approach in MCCs.

Identification and localization of novel IDA and ODA interactors

Importantly, our APMS identified not only known interactors, but also several novel interaction partners. For example, we observed interaction between Dnai2 and Nme9 (Figure 3B). Nme9 is highly similar to the *Chlamydomonas* ODA light chain LC3 and is present in the axonemes of airway cilia and sperm flagella in mice (Sadek et al., 2003). As in mice, *Xenopus* GFP-Nme9 localized to MCC axonemes (Figure 4A). More importantly, however, we also observed GFP-Nme9 in the cytoplasm, where it colocalized with Dnai2 specifically in ODA sub-DynAPs (Figure 4B,C).

Another notable interaction was that between Wdr78 and Wdr18 (Figure 3C). This result is significant because Wdr18 has been implicated in the control of ciliary beating, but its mechanism of

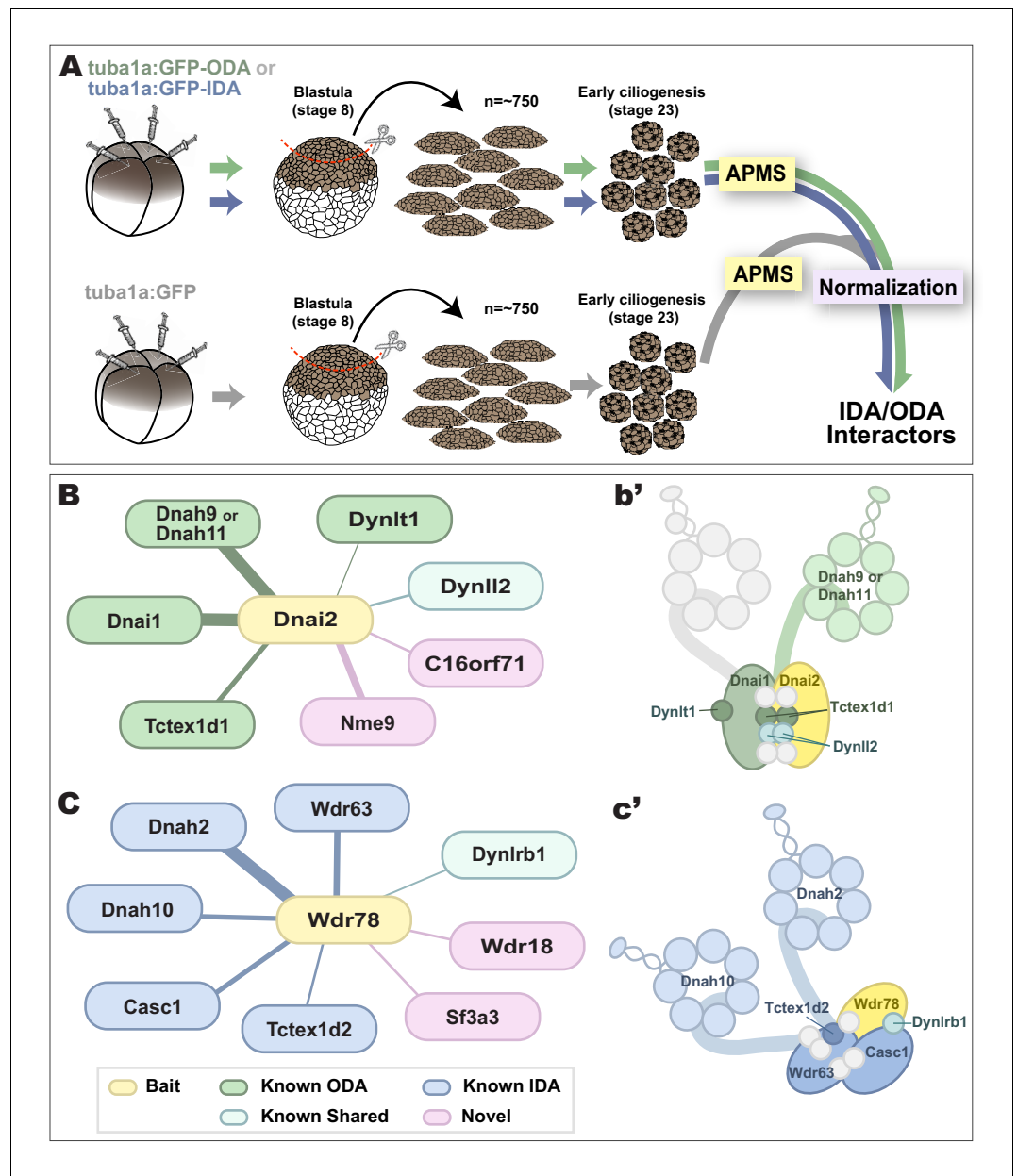


Figure 3. Specific identification of outer and inner arm dynein interactors. (A) Schematic of APMS workflow for identifying *in vivo* ODA and IDA interactors. GFP-tagged ODA or IDA driven by MCC-specific alpha-tubulin promoter by plasmid injection into *Xenopus* embryos and animal caps were isolated at stage 8. The cultured explants were collected at early ciliogenesis stage (stage 23) and subjected to APMS. Unfused GFP was assessed simultaneously and the data subtracted to control for non-specific interactions. (B) Spoke diagram displaying Dnai2 (ODA) interactors, line weight of spokes indicates Log₂ fold-change of PSMs. b'. Schematic of outer dynein arm indicating identified Dnai2 preys. (C) Spoke diagram displaying Wdr78 (IDA) interactors. c'. Schematic of inner dynein arm (f type) indicating identified Wdr78 preys.

The online version of this article includes the following figure supplement(s) for figure 3:

Figure supplement 1. Proteins co-precipitating with Dnai2, Wdr78, and C16orf71 by APMS.

action is entirely unknown (Gao et al., 2011; Silversides et al., 2012). Interestingly, GFP-Wdr18 was not present in the axonemes of motile cilia (not shown) but did localize to DynAPs (Figure 4D). Interestingly, GFP-Wdr18 was also strongly enriched in the apical cytoplasm of MCCs, near the basal bodies (Figure 4E). Similarly, another IDA interactor, Sf3a3 (Figure 3C), was also absent from

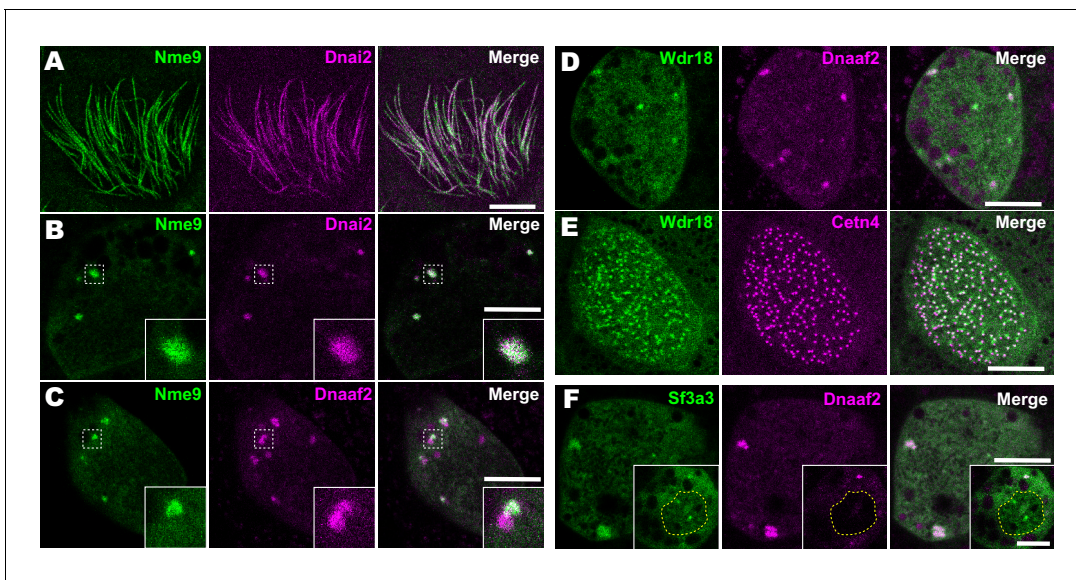


Figure 4. Localization of novel IDA and ODA interactors. (A) *En face* optical section just above the apical surface of a *Xenopus* MCC showing axonemal localization of GFP-Nme9. (B) A similar optical section through the MCC cytoplasm shows near-perfect colocalization of GFP-Nme9 with the ODA subunit mCherry-Dnai2 in DynAPs. Dashed box indicates area shown at higher magnification in the inset. (C) GFP-Nme9 only partially co-localizes with mCherry-Dnaaf2. (D) *En face* optical section through the cytoplasm shows colocalization of GFP-Wdr18 with mCherry-Dnaaf2 in DynAPs. (E) A similar section just below the MCC apical surface reveals GFP-Wdr18 localization near basal bodies labeled with RFP-Centrin4 (F) GFP-Sf3a3 co-localizes with mCherry-Dnaaf2. Scale bars = 10 μ m.

The online version of this article includes the following figure supplement(s) for figure 4:

Figure supplement 1. Sf3a3-GFP (green) also localizes to speckles within the nucleus (labeled with RFP-Histone2B, red) in a *Xenopus* MCC.

axonemes (not shown), but did localize in DynAPs (**Figure 4F**). This protein was previously implicated in splicing (Krämer *et al.*, 2005), so as expected, we also observed GFP-Sf3a3 in nuclear foci in *Xenopus* MCCs (**Figure 4—figure supplement 1**). Together, these data demonstrate that our APMS approach in *Xenopus* effectively identified novel, biologically plausible IDA and ODA-interacting proteins *in vivo*.

C16orf71/Daap1 is a novel ODA-interacting protein with an interesting evolutionary trajectory

The most interesting interaction we identified in this study was that between Dnai2 and C16orf71 (**Figure 3B**). Though highly conserved among vertebrates, this protein has yet to be the subject of even a single published study. We first sought to confirm that C16orf71 is a *bona fide* ODA interactor using a reciprocal APMS experiment, with GFP-tagged *Xenopus* C16orf71 as the bait. This analysis revealed interaction of C16orf71 not only with Dnai2, but also other ODA subunits such as Dnai1, Dnah9 and Nme9, as well as Ruvbl1 (**Figure 5A**; **Figure 3—figure supplement 1G–I**, Supp. File 3). Based on these findings and data described below, we propose to rename this protein Daap1, for Dynein Axonemal-Associated Protein 1.

In situ hybridization revealed that *Xenopus* *Daap1* expression was enriched in MCCs in the epidermis and the nephrostomes of the pronephros (**Figure 5B**). Likewise, examination of data from the Human Protein Atlas (Uhlén *et al.*, 2015) revealed that human DAAP1 protein is present exclusively in tissues with motile cilia (**Figure 5C**). Interestingly, while Daap1 is conserved among vertebrates, it appears to have followed an interesting evolutionary trajectory. In mammals, including humans, orthologs of Daap1 are composed entirely of a domain of unknown function (DUF4701), which phylogenetic analysis suggests is vertebrate-specific (**Figure 5D**). Our analysis of this sequence suggests it is intrinsically disordered (**Figure 5E**), a feature commonly associated with liquid-like organelles. By contrast, all non-mammalian vertebrate Daap1 orthologs contain not only the DUF4701 domain, but also a long C-terminal extension harboring, remarkably, an NDK domain

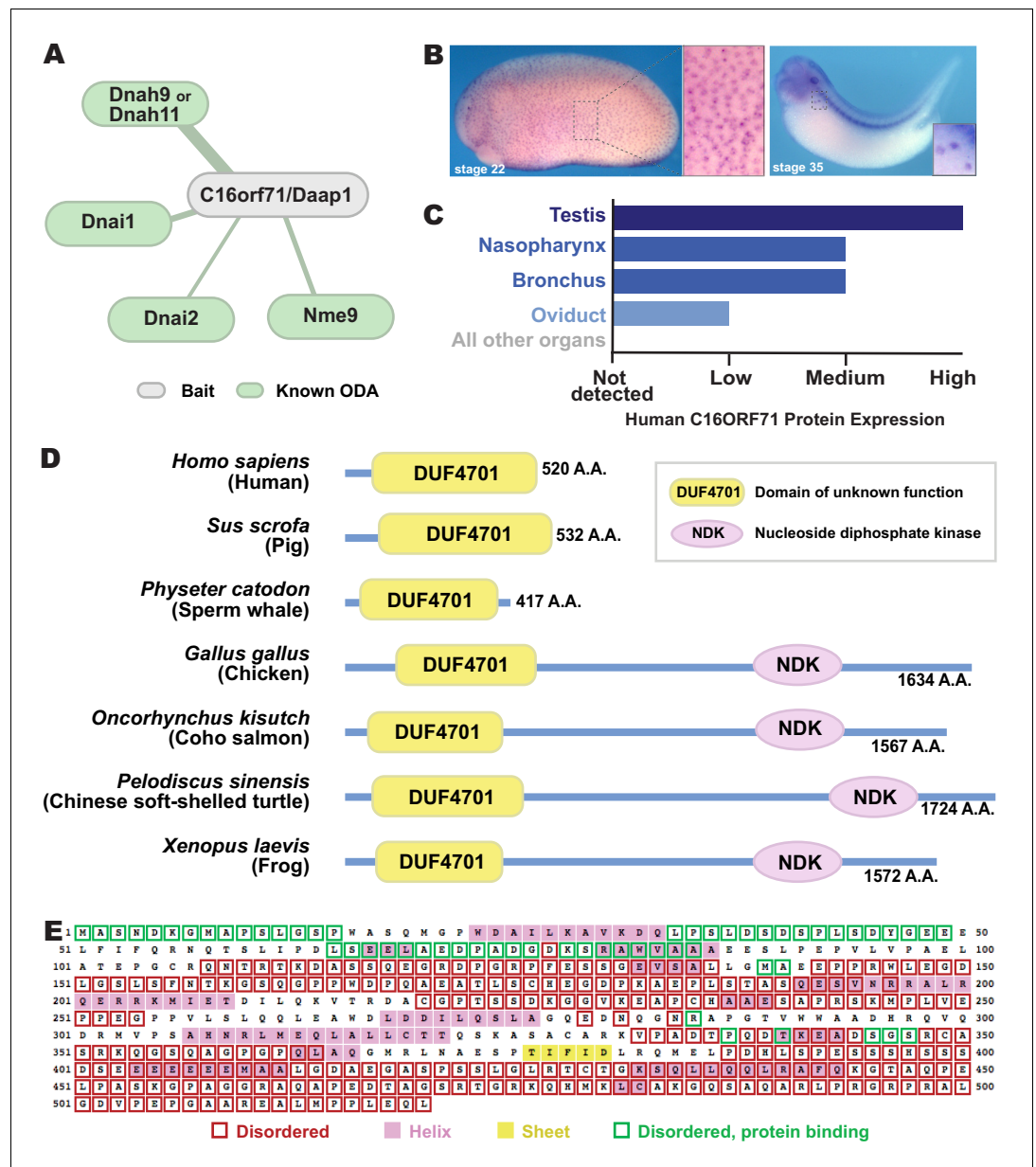


Figure 5. C16orf71/Daap1 is a novel ODA interactor specifically expressed in MCCs. (A) Spoke diagram displaying C16orf71/Daap1 interactors; line weight indicates Log2 fold- change of PSMs. (B) In situ hybridization of *Daap1* in *Xenopus* reveals expression in epidermal MCCs (left) and MCCs in the nephrostomes (right). (C) Graph showing C16orf71 protein expression levels in human tissues from the Human Protein Atlas (Uhlén et al., 2015). (D) Domain organization of C16orf71/Daap1 orthologs across vertebrates from NCBI Orthologs. (E) Domain prediction with human C16orf71/DAAP1 sequence from the PSIPRED Protein Analysis Workbench for disorder and secondary structure prediction.

similar to those in Nme8 and Nme9 (Figure 5D). We therefore chose this novel ODA interactor for more in-depth study.

Daap1 is a DynAP-specific protein in *Xenopus* and human MCCs

We next examined the localization of the Daap1 protein in *Xenopus* MCCs. Intriguingly, no signal was detectable in MCC axonemes as marked by Dnai2, and instead, GFP-Daap1 was localized exclusively to foci in the cytoplasm of MCCs (Figure 6A,B). GFP-Daap1 strongly co-localized with Dnai2 (Figure 6B), suggesting that the interaction we identified by APMS occurs in DynAPs. Indeed,

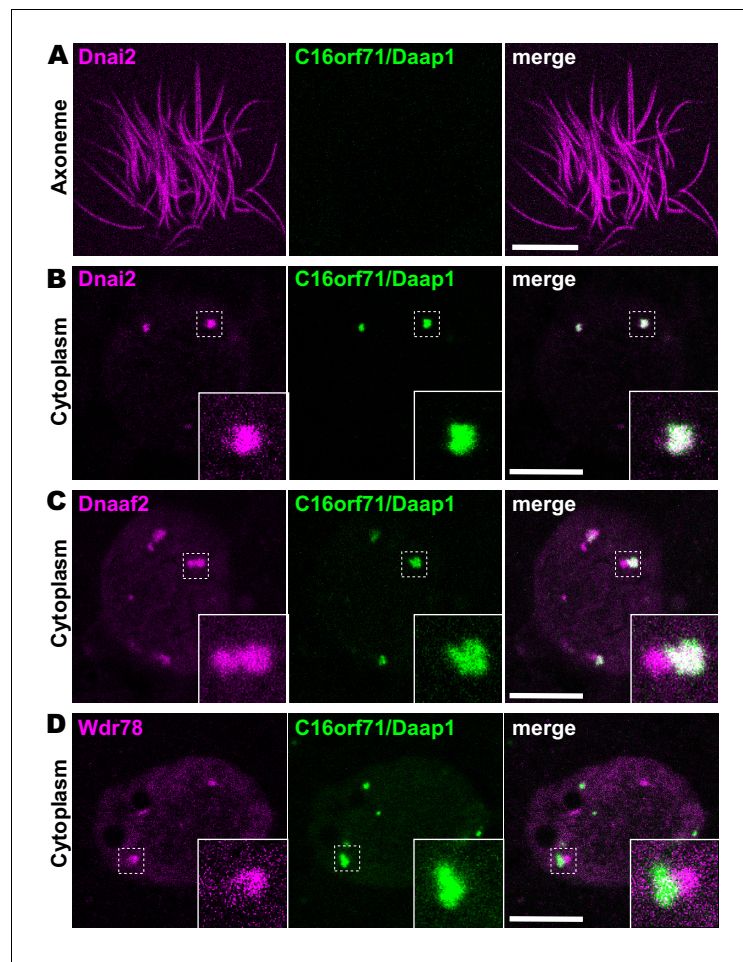


Figure 6. Daap1 is a DynAP-specific protein in *Xenopus* MCCs. (A) *En face* optical section above the apical surface of a *Xenopus* MCC reveals absence of GFP-Daap1 in axonemes. (B) A similar optical section through the MCC cytoplasm shows near-perfect colocalization of GFP-Daap1 with the ODA subunit mCherry-Dnai2 in DynAPs. Inset shows higher magnification view of dashed box for each panel. (C) GFP-Daap1 only partially co-localizes with mCherry-Dnaaf2. (D) GFP-Daap1 co-localizes only very weakly with the IDA subunit mCherry-Wdr78. Scale bars = 10 μ m.

Daap1 displayed a partial co-localization with Dnaaf2 similar to that observed in the cytoplasm for other ODA subunits (Figure 6C). Finally, Daap1 displayed little or no overlap with GFP-Wdr78 (Figure 6D), suggesting that it localized specifically in ODA sub-DynAPs (Figure 6D).

Because human DAAP1 lacks the C-terminal NDK domain present in the *Xenopus* ortholog (Figure 5D), we were curious to know if the human ortholog also localizes to DynAPs. We therefore performed immunostaining for DAAP1 on sections of human lung. As observed in *Xenopus*, DAAP1 was not detectable in the axonemes of human MCCs (Figure 7A, brackets), and cytoplasmic staining for DAAP1 was strongly enriched in DynAPs, as indicated by co-labeling for the ODA subunit DNAI1 (Figure 7A, arrowheads).

This result then prompted us to examine the localization of a deletion construct comprising the isolated N-terminal DUF4701 domain of *Xenopus* Daap1 (i.e. a *Xenopus* equivalent of human DAAP1)(Figure 7B). We found that GFP-Daap1-Nterm also localized to ODA sub-DynAPs in *Xenopus* MCCs (Figure 7C–E). Thus, despite their divergent evolutionary trajectories, both *Xenopus* and human DAAP1 are DynAP-specific cytoplasmic proteins, and the N-terminal DUF4701 domain is sufficient to direct localization to ODA sub-DynAPs.

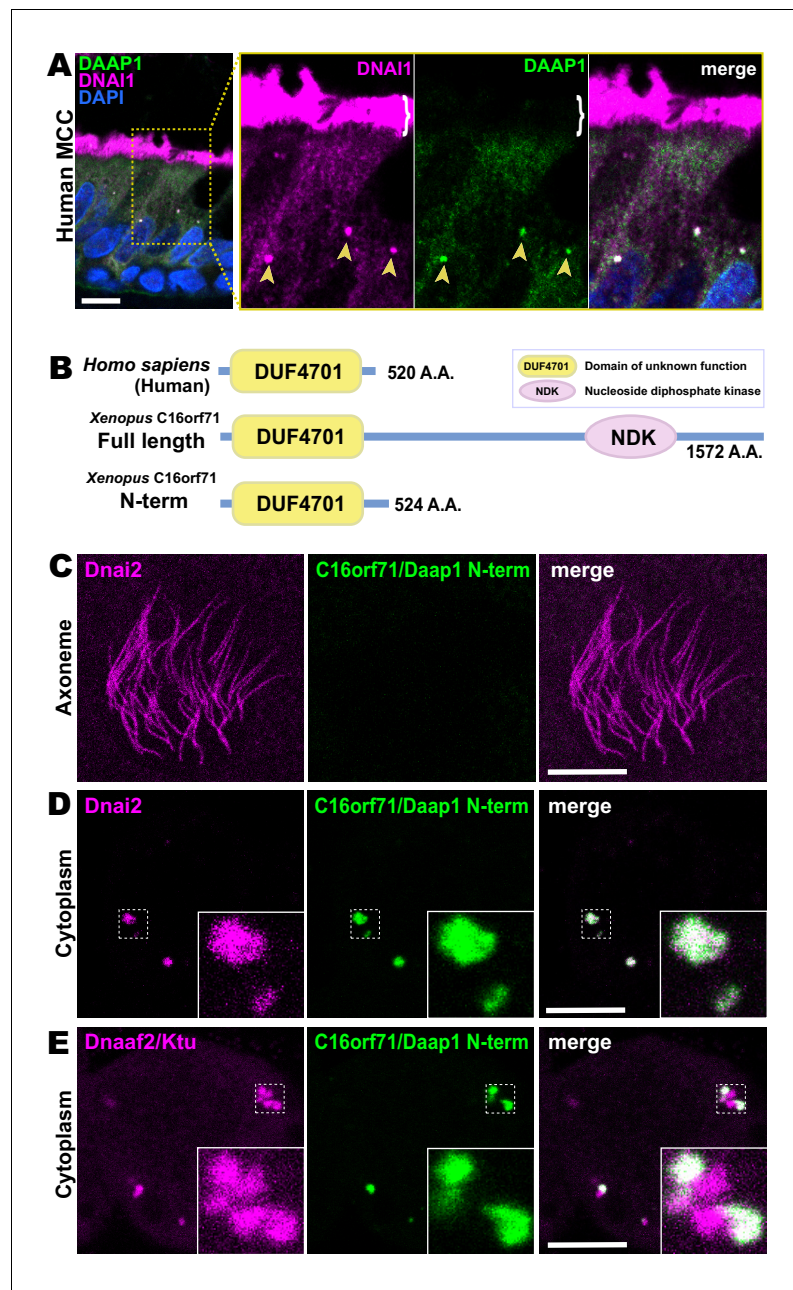


Figure 7. Human DAAP1 is a DynAP-specific protein. (A) A primary human lung section immunostained for human DAAP1 (green) and the ODA subunit DNAI1 (magenta). Boxed area indicates magnified region shown at right. DNAI1 strongly labels MCC axonemes (bracket) and also DynAPs in the cytoplasm (arrowheads). As in *Xenopus*, human DAAP1 is not present in axonemes but is strongly enriched in DynAPs. (DAPI (blue) marks nuclei; scale bar = 10 μ m) (B) Schematic of C16orf71 constructs: *Xenopus* Daap1-Nterm is truncated, containing only the DUF4701 domain, similar to human DAAP1. (C) *En face* optical section above the apical surface of a *Xenopus* MCC reveals absence of Daap1-Nterm-GFP in axonemes. (D, E) Similar optical sections through the cytoplasm shows near-perfect colocalization of GFP-Daap1-Nterm with the ODA subunit mCherry-Dnai2 and only partial colocalization with Dnaaf2/Ktu. In all cases, inset shows higher magnification view of dashed box for accompanying panels. Scale bars = 10 μ m.

Daap1 is stably retained in ODA sub-DynAPs

DynAPs are liquid-like organelles, and we previously found using FRAP that both the Dnaaf2s and broadly-acting chaperones flux rapidly through these organelles, while both ODA and IDA subunits are stably retained (Huizar *et al.*, 2018). Because Daap1 does not localize to axonemes in either humans or *Xenopus*, its localization to DynAPs suggests a role in ODA processing or assembly, rather than a direct function in ciliary beating. We therefore expected Daap1 to flux rapidly through DynAPs, similar to other cytoplasmic assembly factors. To our surprise, however, FRAP revealed instead that *Xenopus* Daap1 was retained in DynAPs in a manner that was similar, but not identical, to dynein subunit Dnai2 (Figure 8). Specifically, Daap1 displayed a somewhat slower initial recovery, but rather than plateauing at around 20 s, the signal continued to slowly recover for at least 60 s (Figure 8B).

We were also interested to know if human Daap1 displays similar dynamics, but FRAP assays in human MCCs are very challenging. We therefore examined the FRAP kinetics of *Xenopus* Daap1-Nterm as a proxy of the human protein for use in *Xenopus* MCCs. In FRAP assays, Daap1-Nterm

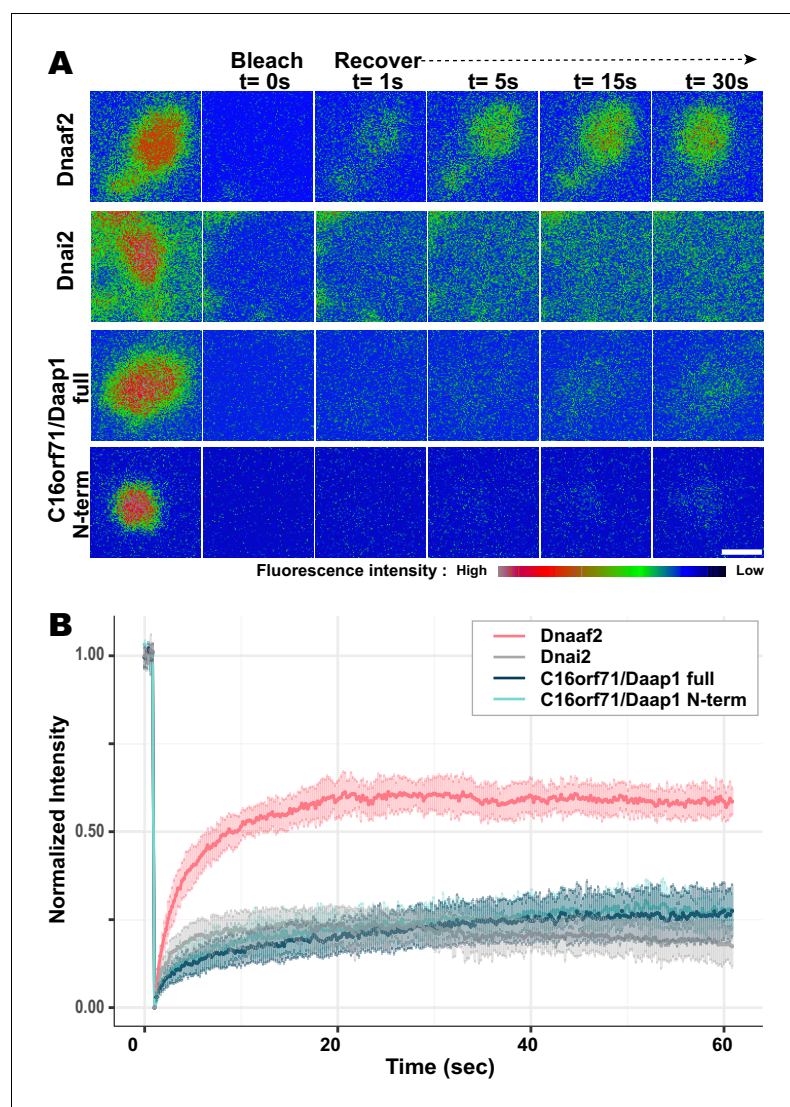


Figure 8. Daap1 is stably retained in DynAPs. (A) Stills from time-lapse imaging of FRAP for the assembly factor GFP-Dnaaf2, the ODA subunit GFP-Dnai2, GFP-Daap1 and GFP-Daap1-Nterm. Images are color-coded to highlight changes in pixel intensity (see key below images). Scale bar = 1 μ m (B) Graphs displaying FRAP curves for GFP-Dnaaf2 (n = 14), GFP-Dnai2 (n = 12) GFP-Daap1 (n = 26), and GFP-Daap1-Nterm (n = 22).

displayed essentially identical kinetics to full-length Daap1 (**Figure 8B**). This result is consistent with the localization data above and strongly suggests that the DUF4701 domain is sufficient to drive the retention of Daap1 in ODA sub-DynAPs.

Daap1 is required for deployment of ODAs to the axoneme

We tested this idea using morpholino (MO)-mediated knockdown (KD) to disrupt splicing of the *Daap1* transcript in *Xenopus* (**Figure 9—figure supplement 1A**). Consistent with its interaction specifically with ciliary beating machinery, Daap1-KD had no impact on ciliogenesis itself, and well-defined ciliary tufts were observed in all morphants. However, Daap1-KD elicited severe loss of ODAs from MCC axonemes (**Figure 9A,B, D, E**). Both the intermediate chain Dnai2, as well as the light chain Dnal1 were severely reduced, with only small domains of the proximal axoneme labeled by either marker following knockdown (**Figure 9A,B**). We quantified this phenotype by examining intensity plots for Dnai2 and Dnal1 along the length of motile axonemes and normalizing this against co-expressed membrane-RFP (**Figure 9C,F**). Importantly, this phenotype was also observed using a second MO targeting a distinct splice site, suggesting that this phenotype is a specific effect of Daap1 depletion. (**Figure 9—figure supplement 1B,C**).

Given the specific localization of Daap1 to ODA sub-DynAPs, we expected that Daap1 loss should specifically impact axonemal deployment of ODAs, and for the most part, this was the case. While both ODA proteins were depleted along the entire length of the axoneme, the IDA-*a, c, d* protein Dnal1 and the IDA-*f* protein Wdr78 displayed more subtle defects (**Figure 9G,H,J,K**). Dnal1 displayed a mild reduction along the entire axoneme (**Figure 9I**), while Wdr78 displayed an even mild disruption that was largely restricted to the distal axoneme (**Figure 9L**). Interestingly, this result may relate to the partial co-localization of Dnal1 with Dnai2 (**Figure 2—figure supplement 1C**) and reflects the known intimate link between assembly of ODAs and IDA-*c* (e.g. *Yamaguchi et al., 2018; Yamamoto et al., 2020*).

Overall, comparisons of subunit intensities demonstrated that loss of Daap1 had a significantly greater impact on ODA compared to IDAs. Because the effect on IDA-*f* was quite subtle (**Figure 9L**), we also made a more direct comparison by generating intensity plots to directly compare Wdr78 and Dnal1 co-expressed in the same axonemes (**Figure 9M-P**). This analysis clearly demonstrated a profoundly more substantial loss of ODAs than IDAs after Daap1 depletion.

Thus, Daap1 is a DynAP-specific protein that interacts with ODA subunits and is essential for the deployment of ODAs to axonemes and further suggests a complex interplay of ODAs and IDAs is required to establish the final patterning of motors that drive ciliary beating.

Discussion

Here, we have used live imaging to demonstrate that DynAPs contain sub-compartments that specifically partition inner and outer dynein arm subunits (**Figures 1 and 2**). Using in vivo proteomics, we identify several novel axonemal dynein interactors, including C16orf71/Daap1 (**Figures 3 and 5**). In both *Xenopus* and humans, Daap1 is present exclusively in the cytoplasm and not in ciliary axonemes. Moreover, the protein is highly enriched in DynAPs, where it is restricted to the ODA sub-DynAP (**Figures 6–8**). Remarkably, loss-of-function experiments revealed a requirement for Daap1 predominantly in the deployment of ODAs throughout the length of MCC cilia, while the impact on IDAs was only very mild, and restricted largely to the distal axoneme (**Figure 9**). Together, these data are significant for (1) adding weight to the argument that DynAPs serve a specific function in the assembly of axonemal dyneins, (2) demonstrating that sub-DynAPs represent molecularly and functionally distinct spaces within DynAPs, and (3) suggesting that additional DynAP-specific regulatory factors remain to be discovered.

Novel axonemal dynein interactors

In addition to the mechanistic insights provided by this study (discussed in detail below), our method for APMS and the datasets of in vivo IDA and ODA interactors provided here will be a useful resource for future studies. For example, *wdr18* knockdown results in left/right asymmetry defects in zebrafish and mutations in human *WDR18* are associated with congenital heart defects (*Gao et al., 2011; Silversides et al., 2012*); both phenotypes are indicative of ciliary beating defects, but the mechanism of Wdr18 action is entirely unknown. The data here are significant, then, for connecting

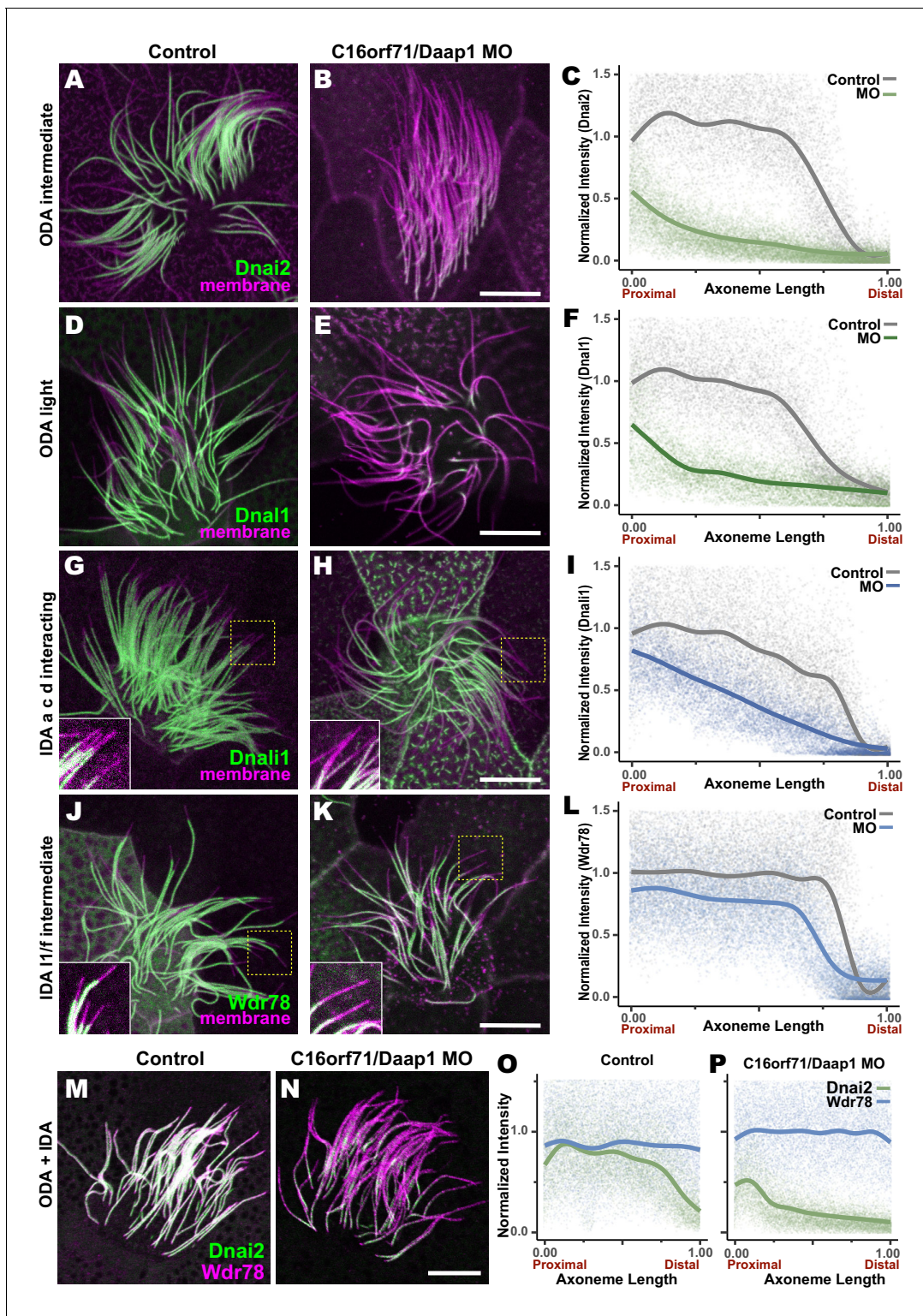


Figure 9. Loss of *C16orf71* disrupts deployment of dynein subunits to the axoneme. (A–B) *Xenopus* MCC axonemes labeled by membrane-RFP (magenta) together with the GFP-Dnai2, an ODA intermediated chain in control embryo (A) and in *C16orf71*/Daap1 morphant (B). (C) Graph showing intensity of GFP-Dnai2 along the normalized axoneme length (n = 29 for control, 51 for morphant). (D–E) MCCs labeled by membrane-RFP (magenta) together with the GFP-Dnai1, an ODA light chain in control embryo (D) and in *C16orf71*/Daap1 morphant (E). (F) Graph showing intensity of GFP-Dnai1 along the normalized axoneme length (n = 27 for control, 26 for morphant). (G–H) MCCs labeled by membrane RFP (magenta) together with the GFP-Dnai1, an IDA a, c, d interacting protein in control embryo (G) and in *C16orf71*/Daap1 morphant (H). (I) Graph showing intensity of GFP-Dnai1f along the normalized axoneme length (n = 27 for control, 26 for morphant). (J–K) MCCs labeled by membrane RFP (magenta) together with the GFP-Wdr78, an IDA 11/f interacting protein in control embryo (J) and in *C16orf71*/Daap1 morphant (K). (L) Graph showing intensity of GFP-Wdr78 along the normalized axoneme length (n = 27 for control, 26 for morphant). (M–N) MCCs labeled by membrane RFP (magenta) together with the GFP-Dnai2 (M) and GFP-Wdr78 (N) in control embryo (M) and in *C16orf71*/Daap1 morphant (N). (O) Graph showing intensity of GFP-Dnai2 (green) and GFP-Wdr78 (blue) along the normalized axoneme length (n = 27 for control, 26 for morphant). (P) Graph showing intensity of GFP-Dnai2 (green) and GFP-Wdr78 (blue) along the normalized axoneme length (n = 27 for control, 26 for morphant). *Figure 9 continued on next page*

Figure 9 continued

the normalized axoneme length ($n = 30$ for control, 33 for morphant). (J–K) MCCs labeled by membrane-RFP (magenta) together with the GFP-Wdr78, an IDA I1/f intermediated chain in control embryo (J) and in C16orf71/Daap1 morphant (K). (L) Graph showing intensity of GFP-Dnai1 along the normalized axoneme length ($n = 32$ for control, 43 for morphant). Both Dnai2, an ODA Intermediated chain and Dnai1, an ODA light chain are severely reduced in the axoneme in C16orf71 morphants, while IDA subunits display only mild loss from the distal most axoneme (inset). Yellow boxes indicate regions shown in accompanying insets for each panel. (M–N) MCCs co-expressing a marker for both ODAs (Dnai2, green) and IDAs (Wdr78, magenta). Loss of C16orf71 results in specific loss of ODAs in the axoneme (N), while both ODA and IDA properly localize in the axoneme in control (M). (O–P) Graphs showing intensities of GFP-Dnai2 and mCherry-Wdr78 along the normalized axoneme length in controls (O) and morphants (P). Scale bars = $10 \mu\text{m}$.

The online version of this article includes the following figure supplement(s) for figure 9:

Figure supplement 1. Validation of C16orf71 morpholinos.

Wdr18 to IDAs (**Figure 3C**) and for reporting the localization of Wdr18 in motile ciliated cells for the first time. Because we found that Wdr18 was not present in the axonemes of motile cilia but was present in DynAPs and near basal bodies (**Figure 4D,E**), our data suggest that Wdr18 function may not relate directly to IDA function, but rather to the assembly or transport of IDAs.

The more curious result here is the interaction of Wdr78 with Sf3a3 (**Figure 3C**), a well-defined component of the RNA splicing machinery (Krämer et al., 2005). Though unexpected, this result, and our finding that Sf3a3 is enriched in DynAPs (**Figure 4F**) is consistent with our recent report that DynAPs contain both RNA and RNA-associated proteins (Drew et al., 2020), similar to other liquid-like organelles such as stress granules and P bodies (Banani et al., 2017; Lin et al., 2015; Mittag and Parker, 2018). Indeed, we found that Ckap43 and Ckap44, which tether IDA-f to microtubules (Fu et al., 2018; Kubo et al., 2018), are both RNA-associated and localized to sub-DynAPs in *Xenopus* MCCs (Drew et al., 2020).

These findings are especially interesting in light of two additional recent papers. First, a recent paper reports that splicing factor Srsf1 plays a *splicing-independent* role in ciliary beating, likely via control of translation of protein essential for ciliary beating (Haward et al., 2020). A second recent paper reports the presence of 'KL granules' in *Drosophila* sperm that -like DynAPs- contain the Dynein assembly chaperones Ruvbl1/2, and these granules are also highly enriched in the mRNAs encoding axonemal dyneins (Fingerhut and Yamashita, 2020). Taken together, these findings suggest that the role of RNA-associated proteins in DynAP assembly or function should be a rich area for future investigation.

Daap1 and the Nme family of proteins and ciliary beating

Our data here also shed light on the evolution of motile cilia function and regulation in vertebrates, particularly with respect to Daap1 and the Nme family of NDK proteins (Desvignes et al., 2009). Three Nme proteins have been implicated in motile cilia function, including Nme8, which is orthologous to the LC3 ODA subunit in *Chlamydomonas* and has been implicated in human motile ciliopathy (Duriez et al., 2007; Pazour et al., 2006). Nme5 is also required for ciliary beating in *Xenopus* and mammals, though its mechanism of action remains unknown (Anderegg et al., 2019; Chung et al., 2014; Vogel et al., 2012). Nme9 (aka Txndc6 or Txl-2) is localized to motile cilia in the mouse (Sadek et al., 2003), but its function is also unknown. It is significant, then, that we found Nme9 to be localized to *Xenopus* MCC cilia (**Figure 4A–C**). The observed interactions with Dnai2 and Daap1 (**Figure 3C**, **Figure 5A**) suggest that it too may be an ODA subunit.

Curiously, examination of genome data using Xenbase (Karimi et al., 2018; Session et al., 2016) suggests that *Xenopus* lacks the Nme8 gene, and further exploration in NCBI revealed that many vertebrate genomes contain only Nme8 or Nme9, but not both (not shown). The linkage of an NDK domain to the DUF4701 domain in non-mammalian Daap1 orthologs suggest the possibility that these two protein domains may act in concert, and it is tempting to speculate that the NDK domain of Daap1 in non-mammalian vertebrates may explain the absence of either Nme8 or Nme9 in those genomes. Interestingly, a very recent report describes the discovery of novel NDK domain protein in *Tetrahymena* with a specific role in stabilizing ODA dyneins in an inactive conformation for targeting to axonemes (Mali et al., 2020). It is possible then that Daap1 plays a similar role in *Xenopus*. Continued studies in diverse organisms will thus be of great interest.

The composition and function of DynAPs

DynAPs have now been observed in human, mouse, *Xenopus* and zebrafish, so it is clear that these organelles represent a conserved element of MCCs (Diggle et al., 2014; Horani et al., 2018; Huizar et al., 2018; Li et al., 2017; Mali et al., 2018). However, the precise function of DynAPs remains unknown, a situation shared with many liquid-like organelles. Genetic evidence suggests that DynAPs are factories for axonemal dynein assembly, as genetic loss of DynAP-localized DNAAFs consistently results in a failure of dynein arm assembly, failure of dynein deployment to axonemes, and defective ciliary beating (Fabczak and Osinka, 2019). Our identification of Daap1 as yet another protein that is enriched in DynAPs and is specifically required for deployment of axonemal dyneins to cilia adds weight to the argument that DynAPs perform a critical assembly or deployment function.

Strictly speaking, however, all DNAAF proteins and chaperones yet studied are present throughout the cytoplasm and enriched in DynAPs, so we cannot rule out the possibility that dyneins are normally assembled in the cytoplasm, while DynAPs serve some other function. For example, DynAPs may act in storage or assembly of dyneins for rapid deployment to cilia (e.g. for ciliary regeneration) or for quality control and/or degradation of mis-folded dyneins. Answering such questions is a key challenge, and is one faced generally for liquid-like organelles.

Regardless, our data clearly demonstrate that DynAPs are structurally partitioned, as are many other liquid-like organelles (e.g. Feric et al., 2016; Jain et al., 2016; Schmidt and Rohatgi, 2016). Moreover, our observation that Daap1 is restricted to ODA sub-DynAPs (Figures 6 and 7) and that its loss results predominantly in ODA defects (Figure 9) argues that sub-DynAPs reflect a functional sub-compartmentalization. Conversely, though it has been suggested that DNAAFs and chaperones act in a relay system to catalyze iterative steps of ODA and IDA assembly (Mali et al., 2018), we found no evidence of physical compartmentalization of any of the tested DNAAFs and chaperones (Figure 1), suggesting that partitioned localization of those factors is not strictly required. Consistent with this idea, though Ktu has been shown to specifically impact assembly of ODAs and IDA-c (Yamaguchi et al., 2018), we found no restriction of Ktu localization within DynAPs (Figure 1 and see Huizar et al., 2018). Together, our findings here provide a deeper cell biological framework in which to understand the complex genetics of dynein assembly in motile ciliated cells.

Materials and methods

Xenopus embryo manipulations

Xenopus embryo manipulations were carried out using standard protocols. Briefly, female adult *Xenopus* were induced to ovulate by injection of hCG (human chorionic gonadotropin). In vitro fertilization was carried out by homogenizing a small fraction of a testis in 1X Marc's Modified Ringer's (MMR). Embryos were dejellied in 1/3x MMR with 2.5%(w/v) cysteine (pH7.8). Embryos were microinjected with mRNA, circular DNA or morpholinos in 2% Ficoll (w/v) in 1/3x MMR and injected embryos were washed with 1/3x MMR after 2 hr.

Plasmids and MOs for microinjections

Xenopus gene sequences were obtained from Xenbase (<http://www.xenbase.org>) and open reading frames (ORF) of genes were amplified from the *Xenopus* cDNA library by polymerase chain reaction (PCR), and then are inserted into a pCS10R vector containing a fluorescence tag. In addition to the vectors described previously (Huizar et al., 2018), the following constructs were cloned into pCS vector: ruvbl2-mCherry, mCherry-zmynd10, GFP-wdr78, GFP-dnai1, GFP-dnal4, GFP-dnal1, GFP-nme9, GFP-wdr18, GFP-sf3a3, GFP-c16orf71, GFP-c16orf71 N-term (1-527aa), GFP-tctex1d2 and mCherry-wdr78. These constructs were linearized and the capped mRNAs were synthesized using mMESSAGING mMACHINE SP6 transcription kit (ThermoFisher Scientific). Each 80 pg of each mRNA was injected into two ventral blastomeres. For APMS, GFP-dnai2, GFP-wdr78 and GFP-c16orf71 N-term were inserted into pCS2 vectors under multiciliated-cell-specific alpha-tubulin promoter and each 40 pg of each DNA was injected into blastomeres. C16orf71/Daap1 morpholinos were designed to target 1st or 3rd exon-intron splicing junction, The MO sequences and the working concentrations include:

MO #1: 5'-AGTAAGGTCTGTACACTTACCAGGG-3', 30 ng per injection
 MO #2: 5'-ACAAATGCAAGTTTTTCTTACCTCA-3', 10 ng per injection

Immunoprecipitation of *Xenopus* animal caps for mass-spectrometry

To identify Dnai2 or Wdr78 interactors, circular plasmids of GFP only, GFP-dnai2 and GFP-wdr78 driven by MCC-specific α -tubulin promoter were injected into 4-blastomeres of 4 cell stage *Xenopus* embryos. Approximately 550 animal caps per sample were isolated at stage eight using forceps and were cultured in 1X Steinberg's solution (0.58 mM NaCl, 0.64 mM KCl, 0.33 mM Ca(NO₂)₂, 0.8 mM MgSO₄, 5 mM Tris, 50 μ g/ml gentamicin, pH 7.4–7.6) until sibling embryos reached stage 23. The cultured explants were collected and immunoprecipitation (IP) was performed using GFP-Trap Agarose Kit (ChromoTek, cat# gtak-20). Immunoprecipitated proteins were eluted in 2X sample buffer. For MS of C16orf71, GFP only and GFP-c16orf71 plasmid driven by alpha-tubulin promoter were injected into *Xenopus* embryos and ~500 animal caps were collected from each sample. The following steps were performed with the same procedures as described for Dnai2 and Wdr78 AP. For statistical tests of enrichment, GFP-wdr78 and GFP-dnai2 share a GFP- only control (GFP_1a_08292018, GFP_1b_08292018) and GFP-c16orf71 uses a separate GFP-only control (GFP_1a_04252019, GFP_1b_04252019).

Affinity-purification-mass-spectrometry

Immunoprecipitated proteins were resuspended in SDS-PAGE sample buffer and heated 5 min at 95°C before loading onto a 7.5% acrylamide mini-Protean TGX gel (BioRad). After 7 min of electrophoresis at 100 V the gel was stained with Imperial Protein stain (Thermo) according to manufacturer's instructions. The protein band was excised, diced to 1 mm cubes and processed by standard trypsin in-gel digest methods for mass-spectrometry (for experiments with baits Dnai2 and Wdr78) or by the more rapid method of [Goodman et al., 2018](#) for C16orf71. Digested peptides were desalted with HyperSep Spin Tip C-18 columns (Thermo Scientific), dried, and resuspended in 30–60 μ l of 5% acetonitrile, 0.1% acetic acid for mass-spectrometry.

Samples from experiments with baits Dnai2 and Wdr78 were analyzed on a Thermo Orbitrap Fusion mass spectrometer and those with bait C16orf71 were analyzed using a Thermo Orbitrap Fusion Lumos Tribrid mass spectrometer. In all cases peptides were separated using reverse phase chromatography on a Dionex Ultimate 3000 RSLCnano UHPLC system (Thermo Scientific) with a C18 trap to Acclaim C18 PepMap RSLC column (Dionex; Thermo Scientific) configuration and eluted using a 3% to 45% gradient over 60 min. with direct injection into the mass spectrometer using nano-electrospray. Data were collected using a data-dependent top speed HCD acquisition method with full precursor ion scans (MS1) collected at 120,000 m/z resolution. Monoisotopic precursor selection and charge-state screening were enabled using Advanced Peak Determination (APD), with ions of charge $\geq +$ two selected for high energy-induced dissociation (HCD) with stepped collision energy of 30% +/- 3% (Lumos) or 31% +/- 4% (Orbitrap Fusion). Dynamic exclusion was active for ions selected once with an exclusion period of 20 s (Lumos) or 30 s (Orbitrap Fusion). All MS2 scans were centroid and collected in rapid mode.

Raw MS/MS spectra were processed using Proteome Discoverer (v2.3). We used the Percolator node in Proteome Discoverer to assign unique peptide spectral matches (PSMs) at FDR < 5% to the composite form of the *X. laevis* reference proteome described in [Drew et al., 2020](#), which comprises both genome-derived Xenbase JGI v9.1 + GenBank *X. laevis* protein sets, but with homeologs and highly related entries combined into EggNOG vertebrate-level orthology groups ([Huerta-Cepas et al., 2016](#)), based on the method developed in [McWhite et al., 2020](#). In order to identify proteins statistically significantly associated with each bait, we calculated both a log₂ fold-change and a Z-score for each protein based on the observed PSMs in the bait ('expt') versus control ('ctrl') pulldown. The fold-change was computed for each protein as:

$$FC_{protein\ i} = \log_2 \left(\frac{(PSM_{i,expt+1}) / \sum_{j=1}^n (PSM_{j,expt+1})}{(PSM_{i,ctrl+1}) / \sum_{k=1}^n (PSM_{k,ctrl+1})} \right),$$

where n is the total number of proteins considered in the experiment.

For visualization purposes and initial rankings, we calculated significance for protein enrichment in the experiment relative to control using a one-sided Z-test as in [Lu et al., 2007](#) with a 95% confidence threshold ($z \geq 1.645$), as:

$$Z_{\text{protein } i} = \frac{f_{i,\text{expt}} - f_{i,\text{ctrl}}}{\sqrt{\frac{f_{i,\text{comb}}(1-f_{i,\text{comb}})}{\sum_{j=1}^n \text{PSM}_{j,\text{expt}}} + \frac{f_{i,\text{comb}}(1-f_{i,\text{comb}})}{\sum_{j=1}^n \text{PSM}_{j,\text{ctrl}}}},$$

where $f_i = \text{PSM}_i / \sum_{j=1}^n \text{PSM}_j$ and $f_{i,\text{comb}} = (\text{PSM}_{i,\text{expt}} + \text{PSM}_{i,\text{ctrl}}) / \sum_{j=1}^n (\text{PSM}_{j,\text{expt}} + \text{PSM}_{j,\text{ctrl}})$.

We determined significance by calculating p-values for each Z-score using the pnorm distribution function available in the R Stats Package (v3.6.1). We corrected for multiple comparisons by computing the Benjamini-Hochberg false discovery rate using the p.adjust function, also from the R Stats Package (v3.6.1). Probability values and false discovery rates are provided in [Supplementary files 1–3](#).

Imaging, FRAP and image analysis

Xenopus embryos were mounted between cover glass and submerged in 1/3x MMR at stage 22 or 23, and then were imaged immediately. Live images were captured with a Zeiss LSM700 laser scanning confocal microscope using a plan-apochromat 63×1.4 NA oil objective lens (Zeiss) or with Nikon eclipse Ti confocal microscope with a 63×1.4 oil immersion objective. For FRAP experiments, a region of interest (ROI) was defined as a $1.75 \mu\text{m} \times 1.75 \mu\text{m}$ box. ROIs were bleached using 50% laser power of a 488 nm laser and a 0.64 μsec pixel dwell time. Fluorescence recovery was recorded at ~ 0.20 s intervals for up to 300 frames. Bleach correction and FRAP curve-fitting was carried out using a custom python script (modified from http://imagej.net/Analyze_FRAP_movies_with_a_Jython_script). For colocalization analysis, z- stack images were captured from at least 15 cells from at least five different embryos. Z stacks were split to single sections and ROI for DynAPs was defined in red channel (mCherry) of each section using ImageJ selection tool. The analysis was carried out using Fiji coloc2 plugin.

Intensity of dynein subunits and length of axonemes were measured using Fiji. Plots were generated using PRISM eight and the ggplot2 package in R. One-way ANOVA and Tukey's Honest Significant Difference (HSD) test and Welch Two Sample t-test were performed in R.

Protein domain prediction

The human DAAP1 sequence was analyzed using the PSIPRED Protein Analysis Workbench for disorder and secondary structure prediction ([Buchan and Jones, 2019](#)).

Airway epithelial cell culture and immunostaining

Human trachea were isolated from surgical excess of tracheobronchial segments of lungs donated for transplantation. These unidentified tissues are exempt from regulation by HHS regulation 45 CFR Part 46. Paraffin embedded tracheal sections were fixed and immunostained as previously described ([Pan et al., 2007](#); [You et al., 2002](#)). Nuclei were stained using 4', 6-diamidino-2-phenylindole (DAPI, Vector Laboratories, Burlingame, CA, USA). The ODA protein, DNAI1, was detected using primary antibodies obtained from NeuroMab (UC Davis, Ca, clone UNC 65.56.18.11). Antibodies to DAAP1 (C16orf71) were obtained from Sigma-Millipore (St. Louis, MO, HPA049468). Images were acquired using a Zeiss LSM700 laser scanning confocal microscope.

In situ hybridization

In situ hybridization was performed as described previously ([Sive et al., 2000](#)) using DIG-labeled single-stranded RNA probes against a partial sequence (1–1572) of *Xenopus c16orf71* ORF. Bright field images were captured with a Zeiss Axio Zoom. V16 stereo microscope with Carl Zeiss Axiocam HRC color microscope camera.

Rt-pcr

To verify the efficiency of *C16orf71* MOs, MOs were injected into all cells at the 4 cell stage and total RNA was isolated using the TRIZOL reagent (Invitrogen) at stage 23. cDNA was synthesized using M-MLV Reverse Transcriptase (Invitrogen) and random hexamers. *C16orf71* cDNAs were amplified by Taq polymerase (NEB) with these primers: *c16orf71* 5F 5'-cttcagagcaggacggattt-3', *c16orf71* 582R 5'-ggcagaggtgcttagatgtt-3', *c16orf71* 600F 5'- gggcttgctattgcagtttc-3', *c16orf71* 1254R 5'-tctctaccgtccttctcttc-3'. *odc1* primers were *odc1* 426F 5'-ggcaaggaatcacccaatg-3' and *odc1* 843R 5'-ggcaacatagtatctcccaggctc-3'.

Data deposition

Proteomics data has been deposited into Massive which in turn was passed to ProteomeXchange.

The Massive accession # is: MSV000085075 The direct link is <https://massive.ucsd.edu/ProteoSAFe/dataset.jsp?task=f6a5e10c6e114b36b8c895664860db7e>.

The ProteomeXchange # is PXD017980 as noted in the paper. The direct link is <http://proteome-central.proteomexchange.org/cgi/GetDataset?ID=PXD017980>.

The direct link to the data ftp site is <ftp://massive.ucsd.edu/MSV000085075/>.

Acknowledgements

We thank Claire McWhite and Anna Battenhouse for consulting and advice on *X. laevis* orthogroup calculations. This work was supported by grants from the NIH R01 HL117164 and R01 HD085901 to JBW; R01 DK110520, R35 GM122480 to EMM; R01 HL128370 and R01 HL146601 to SLB; NIH K08HL150223 to AH and K99 HD092613 and LRP to KD, as well as the Welch Foundation (F-1515) to EMM. Mass spectrometry data collection was supported by CPRIT grant RP110782 to Maria Per-son and by Army Research Office grant W911NF-12-1-0390.

Additional information

Funding

Funder	Grant reference number	Author
NIH	HD085901	John B Wallingford
NIH	HL117164	John B Wallingford
NIH	R01 DK110520	Edward M Marcotte
NIH	R35 GM122480	Edward M Marcotte
NIH	R01 HL128370	Steven L Brody
NIH	R01 HL146601	Steven L Brody
NIH	K08HL150223	Amjad Horani
NIH	K99 HD092613	Kevin Drew
NIH	LRP	Kevin Drew
Welch Foundation	F-1515	Edward M Marcotte
CPRIT	RP110782	Edward M Marcotte
Army Research Office	W911NF-12-1-0390	Edward M Marcotte

The funders had no role in study design, data collection and interpretation, or the decision to submit the work for publication.

Author contributions

Chanjae Lee, Conceptualization, Data curation, Formal analysis, Supervision, Validation, Investigation, Visualization, Methodology, Writing - review and editing; Rachael M Cox, Data curation, Software, Methodology; Ophelia Papoulas, Data curation, Investigation, Methodology, Writing - review and editing; Amjad Horani, Formal analysis, Funding acquisition, Investigation, Methodology; Kevin

Drew, Data curation, Software, Methodology, Project administration; Caitlin C Devitt, Investigation, Methodology; Steven L Brody, Funding acquisition, Investigation, Methodology; Edward M Marcotte, Conceptualization, Data curation, Software, Formal analysis, Supervision, Funding acquisition, Methodology, Project administration, Writing - review and editing; John B Wallingford, Conceptualization, Data curation, Supervision, Funding acquisition, Visualization, Writing - original draft, Project administration, Writing - review and editing

Author ORCIDs

Amjad Horani  <http://orcid.org/0000-0002-5352-1948>

Edward M Marcotte  <https://orcid.org/0000-0001-8808-180X>

John B Wallingford  <https://orcid.org/0000-0002-6280-8625>

Ethics

Animal experimentation: All experiments were performed in strict accordance with the UT IACU protocol # AUP-2018-00225.

Decision letter and Author response

Decision letter <https://doi.org/10.7554/eLife.58662.sa1>

Author response <https://doi.org/10.7554/eLife.58662.sa2>

Additional files

Supplementary files

- Supplementary file 1. Table showing orthogroups and proteins with PSMs identified by APMS with Dnai2.
- Supplementary file 2. Table showing orthogroups and proteins with PSMs identified by APMS with Wdr78.
- Supplementary file 3. Table showing orthogroups and proteins with PSMs identified by APMS with Dnai2.
- Transparent reporting form

Data availability

Proteomics data has been deposited into Massive which in turn was passed to ProteomeXchange. The Massive accession # is: MSV000085075 The ProteomeXchange # is PXD017980 as noted in the paper. The direct link is <http://proteomecentral.proteomexchange.org/cgi/GetDataset?ID=PXD017980> The direct link to the data ftp site is <ftp://massive.ucsd.edu/MSV000085075/>. These data are also provided in Supp. Tables 1-3.

The following datasets were generated:

Author(s)	Year	Dataset title	Dataset URL	Database and Identifier
Marcotte E, Ophelia P	2020	Functional partitioning of a liquid-like organelle during assembly of axonemal dyneins	https://massive.ucsd.edu/ProteoSAFe/data-set.jsp?accession=MSV000085075	MassIVE, 10.25345/C5T69F
Marcotte E, Ophelia P	2020	Functional partitioning of a liquid-like organelle during assembly of axonemal dyneins	http://proteomecentral.proteomexchange.org/cgi/GetDataset?ID=PXD017980	ProteomeXchange, PXD017980

References

Anderegg L, Im Hof Gut M, Hetzel U, Howerth EW, Leuthard F, Kyöstilä K, Lohi H, Pettitt L, Mellersh C, Minor KM, Mickelson JR, Batcher K, Bannasch D, Jagannathan V, Leeb T. 2019. NME5 frameshift variant in alaskan

- malamutes with primary ciliary dyskinesia. *PLOS Genetics* **15**:e1008378. DOI: <https://doi.org/10.1371/journal.pgen.1008378>, PMID: 31479451
- Ariizumi T**, Takahashi S, Chan T, Ito Y, Michiue T, Asashima M. 2009. Isolation and Differentiation of *Xenopus* Animal Cap Cells. *Current Protocols in Stem Cell Biology* **9**:sc01d05s9. DOI: <https://doi.org/10.1002/9780470151808.sc01d05s9>
- Banani SF**, Lee HO, Hyman AA, Rosen MK. 2017. Biomolecular condensates: organizers of cellular biochemistry. *Nature Reviews Molecular Cell Biology* **18**:285–298. DOI: <https://doi.org/10.1038/nrm.2017.7>, PMID: 28225081
- Buchan DWA**, Jones DT. 2019. The PSIPRED protein analysis workbench: 20 years on. *Nucleic Acids Research* **47**:W402–W407. DOI: <https://doi.org/10.1093/nar/gkz297>, PMID: 31251384
- Cho KJ**, Noh SH, Han SM, Choi WI, Kim HY, Yu S, Lee JS, Rim JH, Lee MG, Hildebrandt F, Gee HY. 2018. ZMYND10 stabilizes intermediate chain proteins in the cytoplasmic pre-assembly of dynein arms. *PLOS Genetics* **14**:e1007316. DOI: <https://doi.org/10.1371/journal.pgen.1007316>, PMID: 29601588
- Chung MI**, Kwon T, Tu F, Brooks ER, Gupta R, Meyer M, Baker JC, Marcotte EM, Wallingford JB. 2014. Coordinated genomic control of ciliogenesis and cell movement by RFX2. *eLife* **3**:e01439. DOI: <https://doi.org/10.7554/eLife.01439>, PMID: 24424412
- Deblandre GA**, Wettstein DA, Koyano-Nakagawa N, Kintner C. 1999. A two-step mechanism generates the spacing pattern of the ciliated cells in the skin of *Xenopus* embryos. *Development* **126**:4715–4728. PMID: 10518489
- Desai PB**, Dean AB, Mitchell DR. 2018. Cytoplasmic preassembly and trafficking of axonemal dyneins. In: King S. M (Ed). *Dyneins: Structure, Biology, and Disease*. Academic Press. p. 140–161. DOI: <https://doi.org/10.1016/B978-0-12-809471-6.00004-8>
- Desvignes T**, Pontarotti P, Fauvel C, Bobe J. 2009. Nme protein family evolutionary history, a vertebrate perspective. *BMC Evolutionary Biology* **9**:256. DOI: <https://doi.org/10.1186/1471-2148-9-256>, PMID: 19852809
- Diggle CP**, Moore DJ, Mali G, zur Lage P, Ait-Lounis A, Schmidts M, Shoemark A, Garcia Munoz A, Halachev MR, Gautier P, Yeyati PL, Bonthron DT, Carr IM, Hayward B, Markham AF, Hope JE, von Kriegsheim A, Mitchison HM, Jackson IJ, Durand B, et al. 2014. HEATR2 plays a conserved role in assembly of the ciliary motile apparatus. *PLOS Genetics* **10**:e1004577. DOI: <https://doi.org/10.1371/journal.pgen.1004577>, PMID: 25232951
- Dougherty GW**, Loges NT, Klinkenbusch JA, Olbrich H, Pennekamp P, Menchen T, Raidt J, Wallmeier J, Werner C, Westermann C, Ruckert C, Mirra V, Hjej R, Memari Y, Durbin R, Kolb-Kokocinski A, Praveen K, Kashef MA, Kashef S, Eghtedari F, et al. 2016. DNAH11 localization in the proximal region of respiratory cilia defines distinct outer dynein arm complexes. *American Journal of Respiratory Cell and Molecular Biology* **55**:213–224. DOI: <https://doi.org/10.1165/rcmb.2015-0353OC>, PMID: 26909801
- Drew K**, Lee C, Dang V, Papoulas O, Cox RM, Huizar RL, Marcotte EM, Wallingford JB. 2020. A systematic, label-free method for identifying RNA-associated proteins in vivo provides insights into ciliary beating. *bioRxiv*. DOI: <https://doi.org/10.1101/2020.02.26.966754>
- Duriez B**, Duquesnoy P, Escudier E, Bridoux AM, Escalier D, Rayet I, Marcos E, Vojtek AM, Bercher JF, Amselem S. 2007. A common variant in combination with a nonsense mutation in a member of the thioredoxin family causes primary ciliary dyskinesia. *PNAS* **104**:3336–3341. DOI: <https://doi.org/10.1073/pnas.0611405104>, PMID: 17360648
- Fabczak H**, Osinka A. 2019. Role of the novel Hsp90 Co-Chaperones in dynein arms' Preassembly. *International Journal of Molecular Sciences* **20**:6174. DOI: <https://doi.org/10.3390/ijms20246174>
- Feric M**, Vaidya N, Harmon TS, Mitrea DM, Zhu L, Richardson TM, Kriwacki RW, Pappu RV, Brangwynne CP. 2016. Coexisting liquid phases underlie nucleolar subcompartments. *Cell* **165**:1686–1697. DOI: <https://doi.org/10.1016/j.cell.2016.04.047>, PMID: 27212236
- Fingerhut JM**, Yamashita YM. 2020. Localized mRNA translation mediates maturation of cytoplasmic cilia in *Drosophila* spermatogenesis. *bioRxiv*. DOI: <https://doi.org/10.1101/2020.04.21.054247>
- Fliegauf M**, Olbrich H, Horvath J, Wildhaber JH, Zariwala MA, Kennedy M, Knowles MR, Omran H. 2005. Mislocalization of DNAH5 and DNAH9 in respiratory cells from patients with primary ciliary dyskinesia. *American Journal of Respiratory and Critical Care Medicine* **171**:1343–1349. DOI: <https://doi.org/10.1164/rccm.200411-1583OC>, PMID: 15750039
- Fowkes ME**, Mitchell DR. 1998. The role of preassembled cytoplasmic complexes in assembly of flagellar dynein subunits. *Molecular Biology of the Cell* **9**:2337–2347. DOI: <https://doi.org/10.1091/mbc.9.9.2337>, PMID: 9725897
- Fu G**, Wang Q, Phan N, Urbanska P, Joachimiak E, Lin J, Wloga D, Nicastro D. 2018. The I1 dynein-associated tether and tether head complex is a conserved regulator of ciliary motility. *Molecular Biology of the Cell* **29**:1048–1059. DOI: <https://doi.org/10.1091/mbc.E18-02-0142>, PMID: 29514928
- Gao W**, Xu L, Guan R, Liu X, Han Y, Wu Q, Xiao Y, Qi F, Zhu Z, Lin S, Zhang B. 2011. Wdr18 is required for Kupffer's vesicle formation and regulation of body asymmetry in zebrafish. *PLOS ONE* **6**:e23386. DOI: <https://doi.org/10.1371/journal.pone.0023386>, PMID: 21876750
- Goodman JK**, Zampronio CG, Jones AME, Hernandez-Fernaund JR. 2018. Updates of the In-Gel digestion method for protein analysis by mass spectrometry. *Proteomics* **18**:e1800236. DOI: <https://doi.org/10.1002/pmic.201800236>, PMID: 30259661
- Howard F**, Maslon MM, Yeyati PL, Bellora N, Hansen JN, Aitken S, Lawson J, von Kriegsheim A, Wachten D, Mill P, Adams IR, Cáceres JF. 2020. Translational activity of the splicing factor SRSF1 is required for development and cilia function. *bioRxiv*. DOI: <https://doi.org/10.1101/2020.09.04.263251>

- Hayes JM**, Kim SK, Abitua PB, Park TJ, Herrington ER, Kitayama A, Grow MW, Ueno N, Wallingford JB. 2007. Identification of novel ciliogenesis factors using a new in vivo model for mucociliary epithelial development. *Developmental Biology* **312**:115–130. DOI: <https://doi.org/10.1016/j.ydbio.2007.09.031>, PMID: 17961536
- Horani A**, Druley TE, Zariwala MA, Patel AC, Levinson BT, Van Arendonk LG, Thornton KC, Giacalone JC, Albee AJ, Wilson KS, Turner EH, Nickerson DA, Shendure J, Bayly PV, Leigh MW, Knowles MR, Brody SL, Dutcher SK, Ferkol TW. 2012. Whole-exome capture and sequencing identifies HEATR2 mutation as a cause of primary ciliary dyskinesia. *The American Journal of Human Genetics* **91**:685–693. DOI: <https://doi.org/10.1016/j.ajhg.2012.08.022>, PMID: 23040496
- Horani A**, Ferkol TW, Shoseyov D, Wasserman MG, Oren YS, Kerem B, Amirav I, Cohen-Cymerberknoh M, Dutcher SK, Brody SL, Elpeleg O, Kerem E. 2013. LRRC6 mutation causes primary ciliary dyskinesia with dynein arm defects. *PLOS ONE* **8**:e59436. DOI: <https://doi.org/10.1371/journal.pone.0059436>
- Horani A**, Ferkol TW, Dutcher SK, Brody SL. 2016. Genetics and biology of primary ciliary dyskinesia. *Paediatric Respiratory Reviews* **18**:18–24. DOI: <https://doi.org/10.1016/j.prrv.2015.09.001>, PMID: 26476603
- Horani A**, Ustione A, Huang T, Firth AL, Pan J, Gunsten SP, Haspel JA, Piston DW, Brody SL. 2018. Establishment of the early cilia preassembly protein complex during motile ciliogenesis. *PNAS* **115**:E1221–E1228. DOI: <https://doi.org/10.1073/pnas.1715915115>, PMID: 29358401
- Huerta-Cepas J**, Szklarczyk D, Forslund K, Cook H, Heller D, Walter MC, Rattei T, Mende DR, Sunagawa S, Kuhn M, Jensen LJ, von Mering C, Bork P. 2016. eggNOG 4.5: a hierarchical orthology framework with improved functional annotations for eukaryotic, prokaryotic and viral sequences. *Nucleic Acids Research* **44**:D286–D293. DOI: <https://doi.org/10.1093/nar/gkv1248>, PMID: 26582926
- Huizar RL**, Lee C, Boulgakov AA, Horani A, Tu F, Marcotte EM, Brody SL, Wallingford JB. 2018. A liquid-like organelle at the root of motile ciliopathy. *eLife* **7**:e38497. DOI: <https://doi.org/10.7554/eLife.38497>, PMID: 30561330
- Jain S**, Wheeler JR, Walters RW, Agrawal A, Barsic A, Parker R. 2016. ATPase-Modulated stress granules contain a diverse proteome and substructure. *Cell* **164**:487–498. DOI: <https://doi.org/10.1016/j.cell.2015.12.038>, PMID: 26777405
- Kamiya R**, Yagi T. 2014. Functional diversity of axonemal dyneins as assessed by in vitro and in vivo motility assays of *Chlamydomonas* mutants. *Zoological Science* **31**:633–644. DOI: <https://doi.org/10.2108/zs140066>, PMID: 25284382
- Karimi K**, Fortriede JD, Lotay VS, Burns KA, Wang DZ, Fisher ME, Pells TJ, James-Zorn C, Wang Y, Ponferrada VG, Chu S, Chaturvedi P, Zorn AM, Vize PD. 2018. Xenbase: a genomic, epigenomic and transcriptomic model organism database. *Nucleic Acids Research* **46**:D861–D868. DOI: <https://doi.org/10.1093/nar/gkx936>, PMID: 29059324
- Kim S**, Ma L, Shokhirev MN, Quigley I, Kintner C. 2018. Multicilin and activated E2f4 induce multiciliated cell differentiation in primary fibroblasts. *Scientific Reports* **8**:12369. DOI: <https://doi.org/10.1038/s41598-018-30791-1>, PMID: 30120325
- King SM**. 2018. Composition and assembly of axonemal dyneins. In: King S. M (Ed). *Dyneins: Structure, Biology, and Disease*. Elsevier. p. 162–201.
- Kott E**, Duquesnoy P, Copin B, Legendre M, Dastot-Le Moal F, Montantin G, Jeanson L, Tamalet A, Papon JF, Siffroi JP, Rives N, Mitchell V, de Blic J, Coste A, Clement A, Escalier D, Touré A, Escudier E, Amselem S. 2012. Loss-of-function mutations in LRRC6, a gene essential for proper axonemal assembly of inner and outer dynein arms, cause primary ciliary dyskinesia. *The American Journal of Human Genetics* **91**:958–964. DOI: <https://doi.org/10.1016/j.ajhg.2012.10.003>, PMID: 23122589
- Krämer A**, Ferfaglia F, Huang CJ, Mulhaupt F, Nesic D, Tanackovic G. 2005. Structure-function analysis of the U2 snRNP-associated splicing factor SF3a. *Biochemical Society Transactions* **33**:439–442. DOI: <https://doi.org/10.1042/BST0330439>, PMID: 15916536
- Kubo T**, Hou Y, Cochran DA, Witman GB, Oda T. 2018. A microtubule-dynein tethering complex regulates the axonemal inner dynein f (I1). *Molecular Biology of the Cell* **29**:1060–1074. DOI: <https://doi.org/10.1091/mbc.E17-11-0689>, PMID: 29540525
- Li Y**, Zhao L, Yuan S, Zhang J, Sun Z. 2017. Axonemal dynein assembly requires the R2TP complex component pontin. *Development* **144**:4684–4693. DOI: <https://doi.org/10.1242/dev.152314>, PMID: 29113992
- Lin Y**, Protter DS, Rosen MK, Parker R. 2015. Formation and maturation of Phase-Separated liquid droplets by RNA-Binding proteins. *Molecular Cell* **60**:208–219. DOI: <https://doi.org/10.1016/j.molcel.2015.08.018>, PMID: 26412307
- Lu P**, Vogel C, Wang R, Yao X, Marcotte EM. 2007. Absolute protein expression profiling estimates the relative contributions of transcriptional and translational regulation. *Nature Biotechnology* **25**:117–124. DOI: <https://doi.org/10.1038/nbt1270>, PMID: 17187058
- Ma L**, Quigley I, Omran H, Kintner C. 2014. Multicilin drives centriole biogenesis via E2f proteins. *Genes & Development* **28**:1461–1471. DOI: <https://doi.org/10.1101/gad.243832.114>, PMID: 24934224
- Mali GR**, Yeyati PL, Mizuno S, Dodd DO, Tennant PA, Keighren MA, Zur Lage P, Shoemark A, Garcia-Munoz A, Shimada A, Takeda H, Edlich F, Takahashi S, von Kreigsheim A, Jarman AP, Mill P. 2018. ZMYND10 functions in a chaperone relay during axonemal dynein assembly. *eLife* **7**:e34389. DOI: <https://doi.org/10.7554/eLife.34389>, PMID: 29916806
- Mali GR**, Abid Ali F, Lau CK, Begum F, Skehel M, Carter AP. 2020. Shulin packages axonemal outer dynein arms for ciliary targeting. *bioRxiv*. DOI: <https://doi.org/10.1101/2020.09.04.282897>

- McWhite CD**, Papoulas O, Drew K, Cox RM, June V, Dong OX, Kwon T, Wan C, Salmi ML, Roux SJ, Browning KS, Chen ZJ, Ronald PC, Marcotte EM. 2020. A Pan-plant protein complex map reveals deep conservation and novel assemblies. *Cell* **181**:460–474. DOI: <https://doi.org/10.1016/j.cell.2020.02.049>
- Mitchison HM**, Schmidts M, Loges NT, Freshour J, Dritsoula A, Hirst RA, O'Callaghan C, Blau H, Al Dabbagh M, Olbrich H, Beales PL, Yagi T, Mussaffi H, Chung EMK, Omran H, Mitchell DR. 2012. Mutations in axonemal dynein assembly factor DNAAF3 cause primary ciliary dyskinesia. *Nature Genetics* **44**:381–389. DOI: <https://doi.org/10.1038/ng.1106>
- Mitchison HM**, Valente EM. 2017. Motile and non-motile cilia in human pathology: from function to phenotypes. *The Journal of Pathology* **241**:294–309. DOI: <https://doi.org/10.1002/path.4843>, PMID: 27859258
- Mittag T**, Parker R. 2018. Multiple modes of Protein-Protein interactions promote RNP granule assembly. *Journal of Molecular Biology* **430**:4636–4649. DOI: <https://doi.org/10.1016/j.jmb.2018.08.005>, PMID: 30099026
- Moore DJ**, Onoufriadis A, Shoemark A, Simpson MA, zur Lage PI, de Castro SC, Bartoloni L, Gallone G, Petridi S, Woollard WJ, Antony D, Schmidts M, Didonna T, Makrythanasis P, Bevilard J, Mongan NP, Djakow J, Pals G, Lucas JS, Marthin JK, et al. 2013. Mutations in ZMYND10, a gene essential for proper axonemal assembly of inner and outer dynein arms in humans and flies, cause primary ciliary dyskinesia. *The American Journal of Human Genetics* **93**:346–356. DOI: <https://doi.org/10.1016/j.ajhg.2013.07.009>, PMID: 23891471
- Omran H**, Kobayashi D, Olbrich H, Tsukahara T, Loges NT, Hagiwara H, Zhang Q, Leblond G, O'Toole E, Hara C, Mizuno H, Kawano H, Fliegauf M, Yagi T, Koshida S, Miyawaki A, Zentgraf H, Seithe H, Reinhardt R, Watanabe Y, et al. 2008. Ktu/PF13 is required for cytoplasmic pre-assembly of axonemal dyneins. *Nature* **456**:611–616. DOI: <https://doi.org/10.1038/nature07471>, PMID: 19052621
- Paff T**, Loges NT, Aprea I, Wu K, Bakey Z, Haarman EG, Daniels JMA, Sistermans EA, Bogunovic N, Dougherty GW, Höben IM, Große-Onnebrink J, Matter A, Olbrich H, Werner C, Pals G, Schmidts M, Omran H, Micha D. 2017. Mutations in PIH1D3 cause X-Linked primary ciliary dyskinesia with outer and inner dynein arm defects. *The American Journal of Human Genetics* **100**:160–168. DOI: <https://doi.org/10.1016/j.ajhg.2016.11.019>, PMID: 28041644
- Pan J**, You Y, Huang T, Brody SL. 2007. RhoA-mediated apical actin enrichment is required for ciliogenesis and promoted by Foxj1. *Journal of Cell Science* **120**:1868–1876. DOI: <https://doi.org/10.1242/jcs.005306>, PMID: 17488776
- Pazour GJ**, Agrin N, Walker BL, Witman GB. 2006. Identification of predicted human outer dynein arm genes: candidates for primary ciliary dyskinesia genes. *Journal of Medical Genetics* **43**:62–73. DOI: <https://doi.org/10.1136/jmg.2005.033001>, PMID: 15937072
- Quigley IK**, Kintner C. 2017. Rfx2 stabilizes Foxj1 binding at Chromatin loops to enable multiciliated cell gene expression. *PLoS Genetics* **13**:e1006538. DOI: <https://doi.org/10.1371/journal.pgen.1006538>, PMID: 28103240
- Sadek CM**, Jiménez A, Damdimopoulos AE, Kieselbach T, Nord M, Gustafsson J, Spyrou G, Davis EC, Oko R, Van der Hoorn FA. 2003. Characterization of human thioredoxin-like 2 A novel microtubule-binding thioredoxin expressed predominantly in the cilia of lung airway epithelium and spermatid manchette and axoneme. *Journal of Biological Chemistry* **278**:13133–13142. DOI: <https://doi.org/10.1074/jbc.M300369200>
- Schmidt HB**, Rohatgi R. 2016. In Vivo Formation of Vacuolated Multi-phase Compartments Lacking Membranes. *Cell Reports* **16**:1228–1236. DOI: <https://doi.org/10.1016/j.celrep.2016.06.088>, PMID: 27452472
- Session AM**, Uno Y, Kwon T, Chapman JA, Toyoda A, Takahashi S, Fukui A, Hikosaka A, Suzuki A, Kondo M, van Heeringen SJ, Quigley I, Heinz S, Ogino H, Ochi H, Hellsten U, Lyons JB, Simakov O, Putnam N, Stites J, et al. 2016. Genome evolution in the allotetraploid frog *Xenopus laevis*. *Nature* **538**:336–343. DOI: <https://doi.org/10.1038/nature19840>, PMID: 27762356
- Shin Y**, Brangwynne CP. 2017. Liquid phase condensation in cell physiology and disease. *Science* **357**:eaaf4382. DOI: <https://doi.org/10.1126/science.aaf4382>, PMID: 28935776
- Silversides CK**, Lionel AC, Costain G, Merico D, Migita O, Liu B, Yuen T, Rickaby J, Thiruvahindrapuram B, Marshall CR, Scherer SW, Bassett AS. 2012. Rare copy number variations in adults with tetralogy of fallot implicate novel risk gene pathways. *PLoS Genetics* **8**:e1002843. DOI: <https://doi.org/10.1371/journal.pgen.1002843>, PMID: 22912587
- Sive HL**, Grainger RM, Harland RM. 2000. *Early Development of Xenopus laevis: A Laboratory Manual*. Cold Spring Harbor Press.
- Tu F**, Sedzinski J, Ma Y, Marcotte EM, Wallingford JB. 2018. Protein localization screening *in vivo* reveals novel regulators of multiciliated cell development and function. *Journal of Cell Science* **131**:jcs206565. DOI: <https://doi.org/10.1242/jcs.206565>, PMID: 29180514
- Uhlén M**, Fagerberg L, Hallström BM, Lindskog C, Oksvold P, Mardinoglu A, Sivertsson Å, Kampf C, Sjöstedt E, Asplund A, Olsson I, Edlund K, Lundberg E, Navani S, Szegedy CA, Odeberg J, Djureinovic D, Takanen JO, Hober S, Alm T, et al. 2015. Proteomics Tissue-based map of the human proteome. *Science* **347**:1260419. DOI: <https://doi.org/10.1126/science.1260419>, PMID: 25613900
- UK10K**, Tarkar A, Loges NT, Slagle CE, Francis R, Dougherty GW, Tamayo JV, Shook B, Cantino M, Schwartz D, Jahnke C, Olbrich H, Werner C, Raidt J, Pennekamp P, Abouhamed M, Hjeij R, Köhler G, Griese M, Li Y, Lemke K, et al. 2013. DYX1C1 is required for axonemal dynein assembly and ciliary motility. *Nature Genetics* **45**:995–1003. DOI: <https://doi.org/10.1038/ng.2707>, PMID: 23872636
- UK10K Rare Group**, Olcese C, Patel MP, Shoemark A, Kiviluoto S, Legendre M, Williams HJ, Vaughan CK, Hayward J, Goldenberg A, Emes RD, Munye MM, Dyer L, Cahill T, Bevilard J, Gehrig C, Guipponi M, Chantot S, Duquesnoy P, Thomas L, Jeanson L, et al. 2017. X-linked primary ciliary dyskinesia due to mutations in the cytoplasmic axonemal dynein assembly factor PIH1D3. *Nature Communications* **8**:14279. DOI: <https://doi.org/10.1038/ncomms14279>, PMID: 28176794

- Vogel P**, Read RW, Hansen GM, Payne BJ, Small D, Sands AT, Zambrowicz BP. 2012. Congenital hydrocephalus in genetically engineered mice. *Veterinary Pathology* **49**:166–181. DOI: <https://doi.org/10.1177/0300985811415708>, PMID: 21746835
- Walentek P**, Quigley IK, Sun DI, Sajjan UK, Kintner C, Harland RM. 2016. Ciliary transcription factors and miRNAs precisely regulate Cp110 levels required for ciliary adhesions and ciliogenesis. *eLife* **5**:e17557. DOI: <https://doi.org/10.7554/eLife.17557>, PMID: 27623009
- Walentek P**, Quigley IK. 2017. What we can learn from a tadpole about ciliopathies and airway diseases: Using systems biology in *Xenopus* to study cilia and mucociliary epithelia. *Genesis* **55**:e23001. DOI: <https://doi.org/10.1002/dvg.23001>
- Wallmeier J**, Nielsen KG, Kuehni CE, Lucas JS, Leigh MW, Zariwala MA, Omran H. 2020. Motile ciliopathies. *Nature Reviews Disease Primers* **6**:77. DOI: <https://doi.org/10.1038/s41572-020-0209-6>, PMID: 32943623
- Werner ME**, Mitchell BJ. 2012. Understanding ciliated epithelia: the power of *Xenopus*. *Genesis* **50**:176–185. DOI: <https://doi.org/10.1002/dvg.20824>, PMID: 22083727
- Yamaguchi H**, Oda T, Kikkawa M, Takeda H. 2018. Systematic studies of all PIH proteins in zebrafish reveal their distinct roles in axonemal dynein assembly. *eLife* **7**:e36979. DOI: <https://doi.org/10.7554/eLife.36979>, PMID: 29741156
- Yamamoto R**, Hirono M, Kamiya R. 2010. Discrete PIH proteins function in the cytoplasmic preassembly of different subsets of axonemal dyneins. *Journal of Cell Biology* **190**:65–71. DOI: <https://doi.org/10.1083/jcb.201002081>, PMID: 20603327
- Yamamoto R**, Yanagi S, Nagao M, Yamasaki Y, Tanaka Y, Sale WS, Yagi T, Kon T. 2020. Mutations in PIH proteins MOT48, TWI1 and PF13 define common and unique steps for preassembly of each, different ciliary dynein. *PLOS Genetics* **16**:e1009126. DOI: <https://doi.org/10.1371/journal.pgen.1009126>, PMID: 33141819
- You Y**, Richer EJ, Huang T, Brody SL. 2002. Growth and differentiation of mouse tracheal epithelial cells: selection of a proliferative population. *American Journal of Physiology-Lung Cellular and Molecular Physiology* **283**:L1315–L1321. DOI: <https://doi.org/10.1152/ajplung.00169.2002>, PMID: 12388377
- Zariwala MA**, Gee HY, Kurkowiak M, Al-Mutairi DA, Leigh MW, Hurd TW, Hjeij R, Dell SD, Chaki M, Dougherty GW, Adan M, Spear PC, Esteve-Rudd J, Loges NT, Rosenfeld M, Diaz KA, Olbrich H, Wolf WE, Sheridan E, Batten TF, et al. 2013. ZMYND10 is mutated in primary ciliary dyskinesia and interacts with LRRC6. *The American Journal of Human Genetics* **93**:336–345. DOI: <https://doi.org/10.1016/j.ajhg.2013.06.007>, PMID: 23891469
- Zhao L**, Yuan S, Cao Y, Kallakuri S, Li Y, Kishimoto N, DiBella L, Sun Z. 2013. Reptin/Ruvbl2 is a Lrrc6/Seahorse interactor essential for cilia motility. *PNAS* **110**:12697–12702. DOI: <https://doi.org/10.1073/pnas.1300968110>, PMID: 23858445
- Zur Lage P**, Stefanopoulou P, Styczynska-Soczka K, Quinn N, Mali G, von Kriegsheim A, Mill P, Jarman AP. 2018. Ciliary dynein motor preassembly is regulated by Wdr92 in association with HSP90 co-chaperone, R2TP. *Journal of Cell Biology* **217**:2583–2598. DOI: <https://doi.org/10.1083/jcb.201709026>, PMID: 29743191